



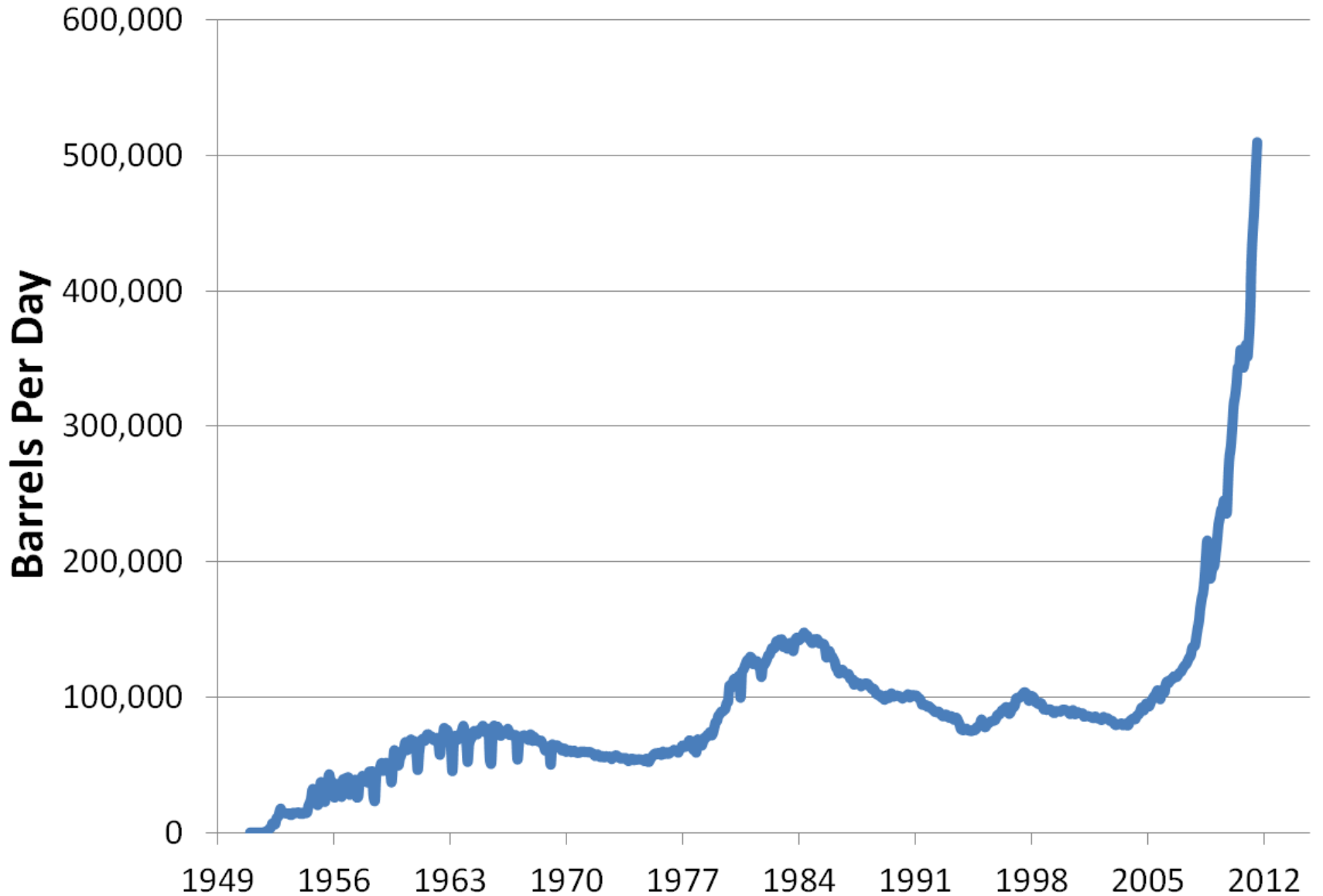
North Dakota Pipeline Authority

ND Oil & Gas Research Council

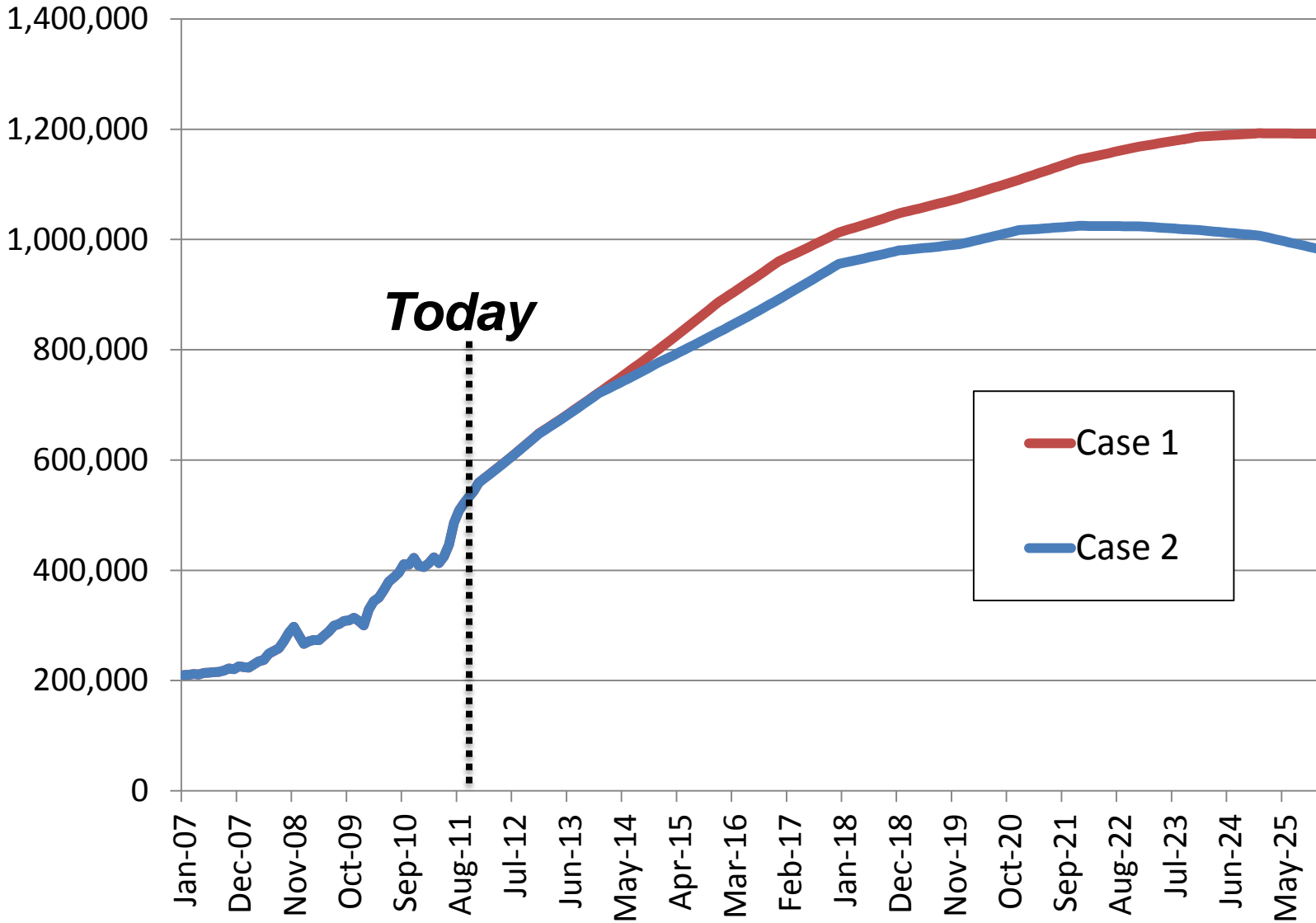
Justin J. Kringstad

January 24, 2012

North Dakota Crude Oil

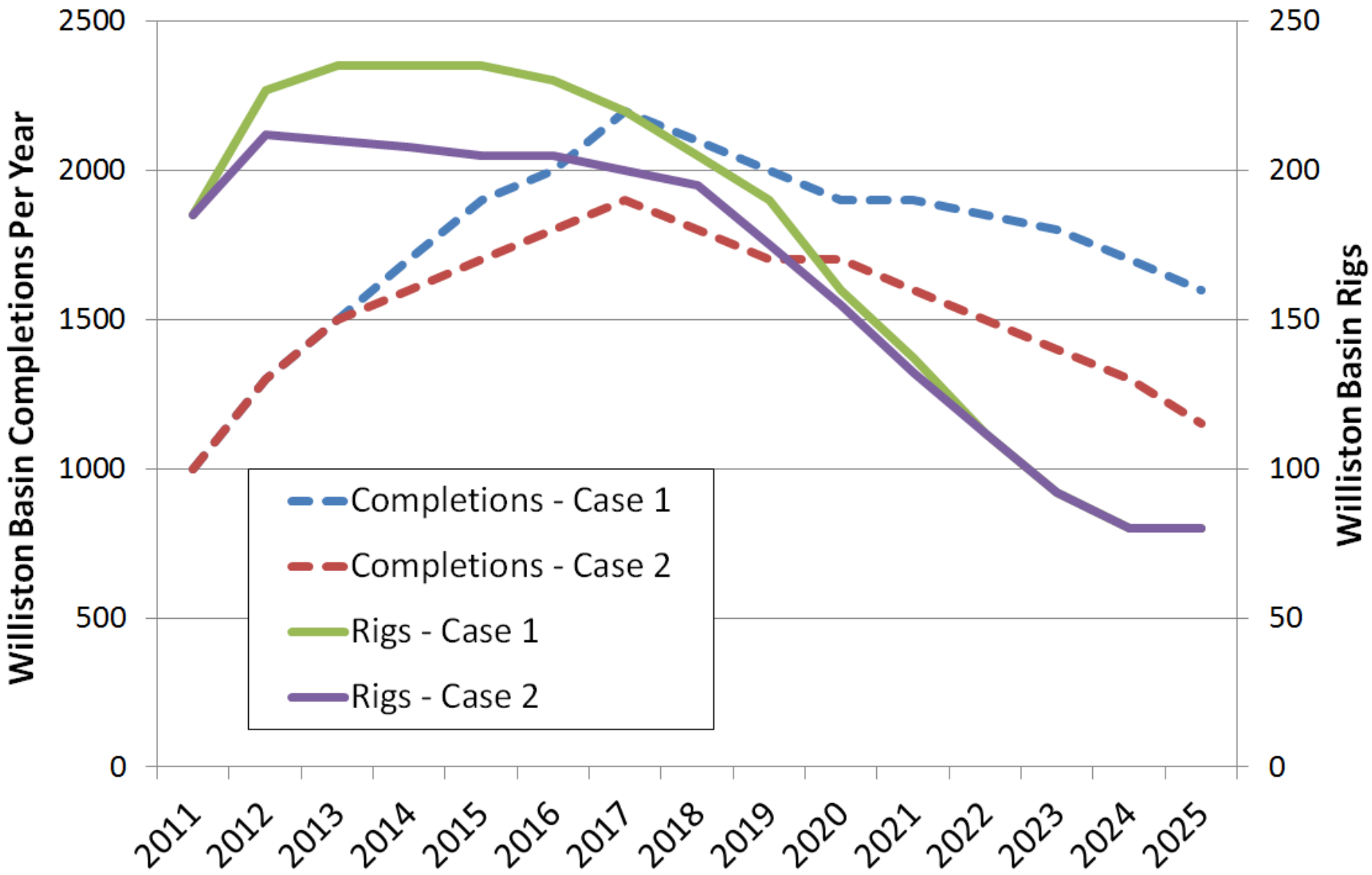


Forecasting Williston Basin Oil Production, BOPD

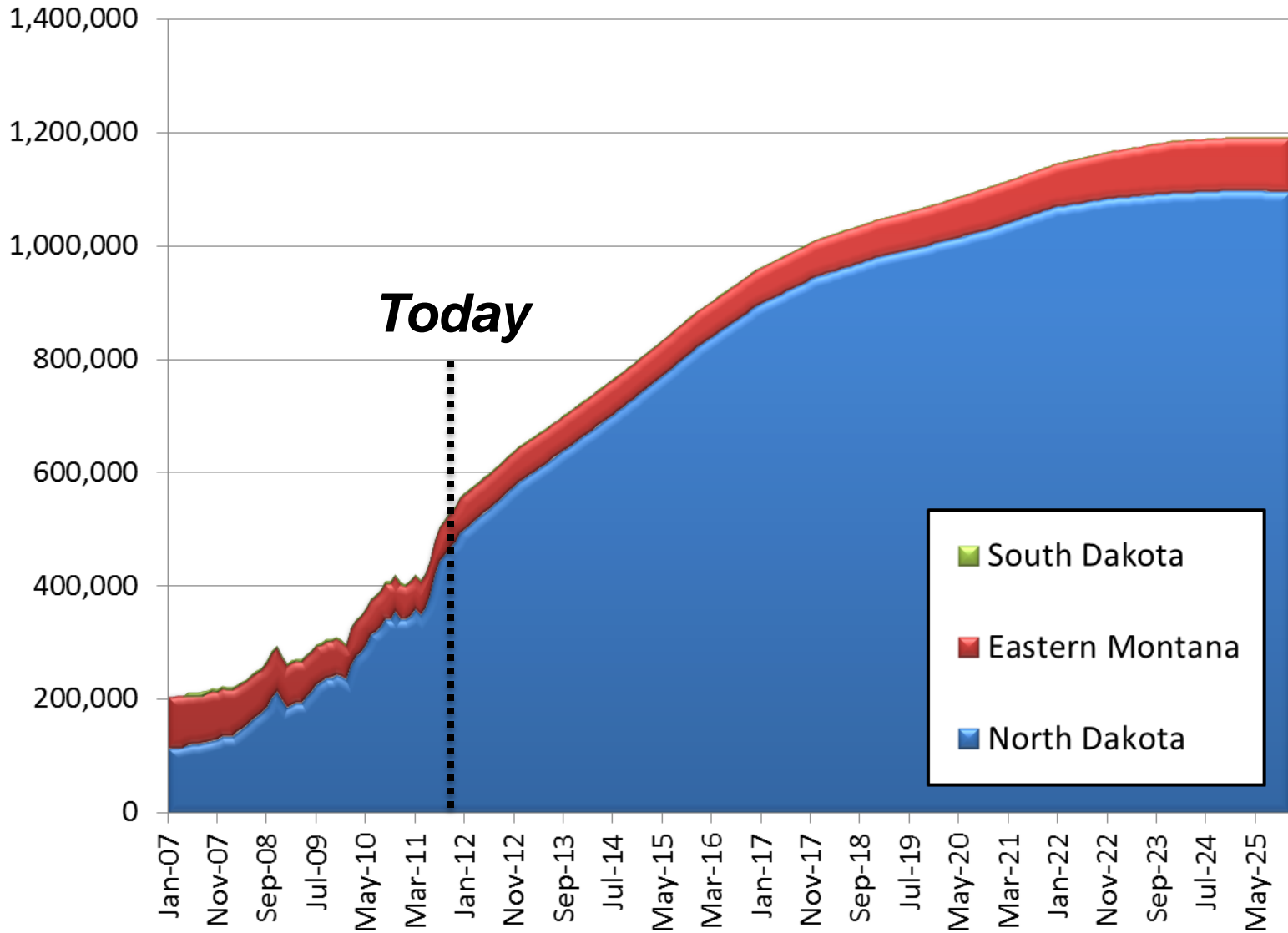


Production forecast is for visual demonstration purposes only and should not be considered accurate for any near or long term planning.





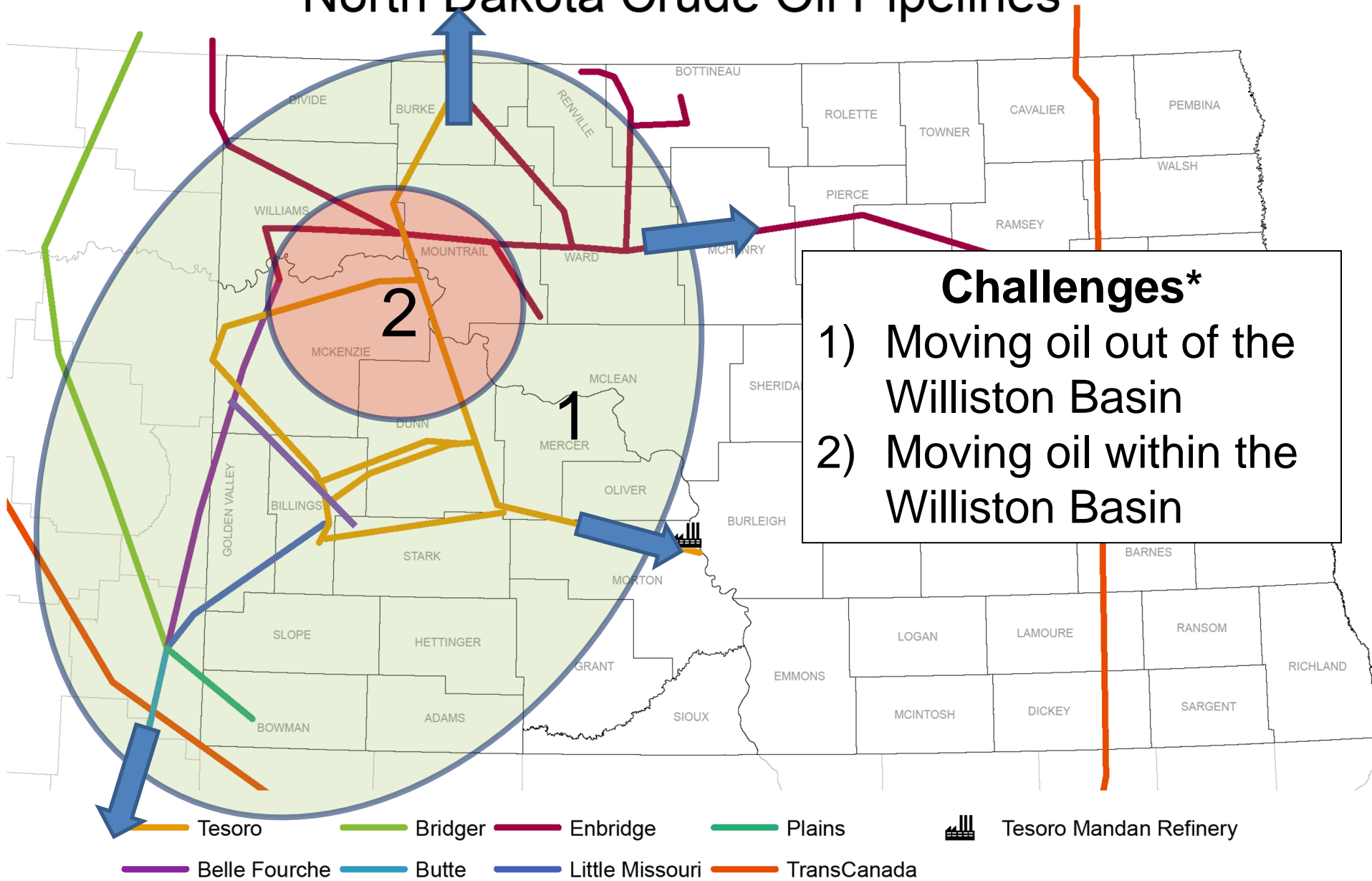
Forecasting Williston Basin Oil Production, BOPD



Production forecast is for visual demonstration purposes only and should not be considered accurate for any near or long term planning.

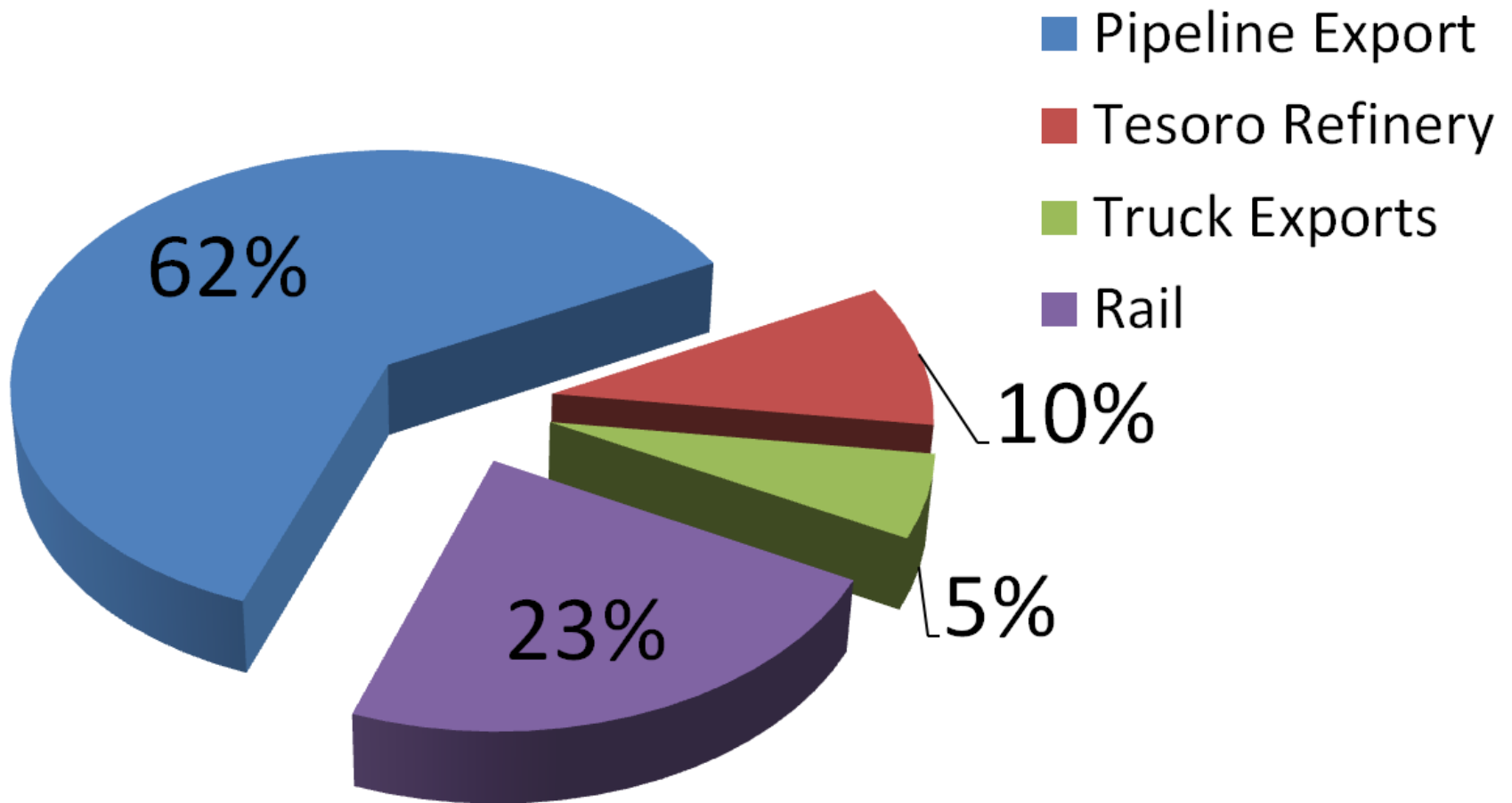


North Dakota Crude Oil Pipelines



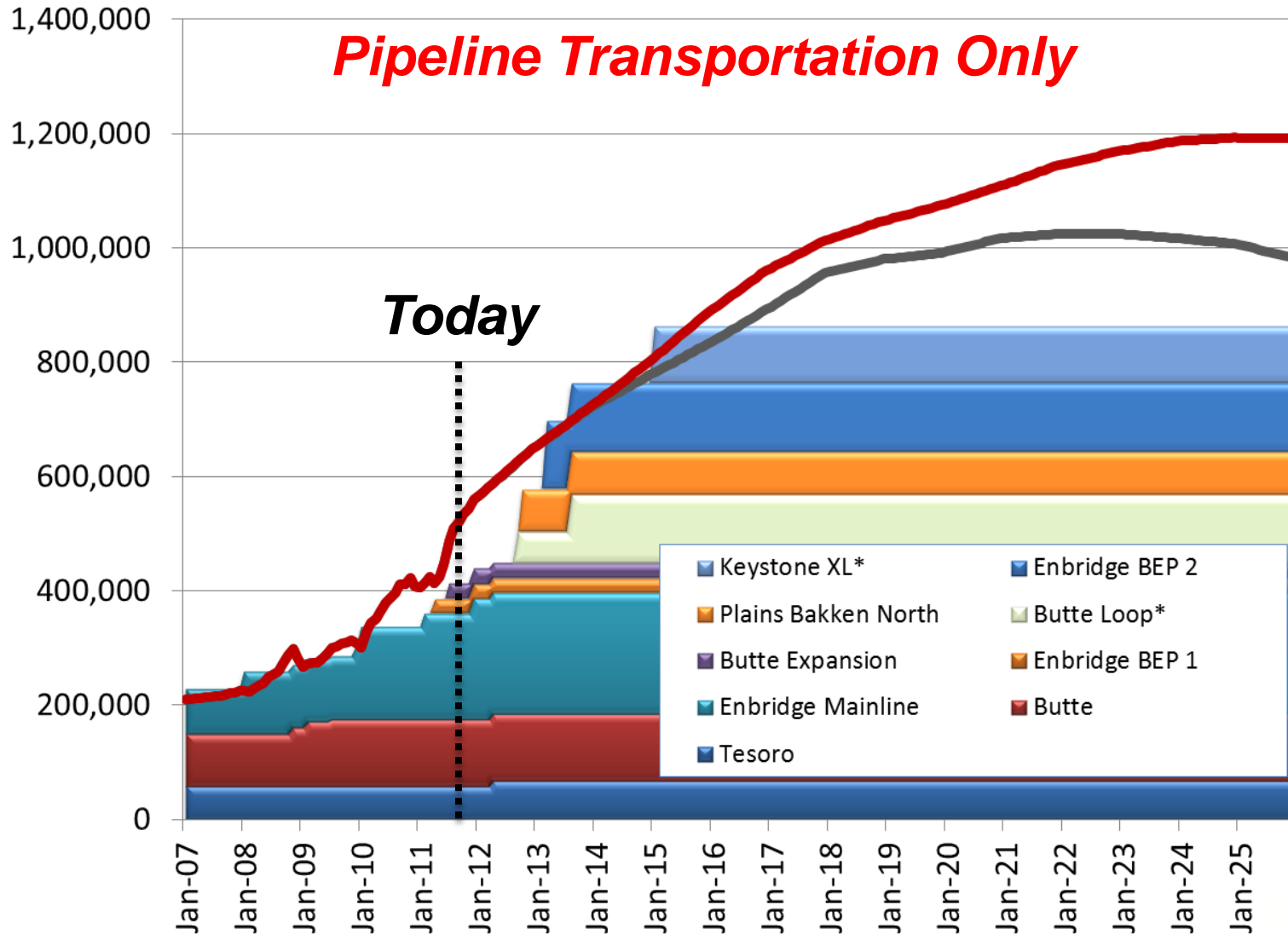
*Modified from Bridger and Belle Fourche Pipelines

Williston Basin Oil Transportation



November 2011 Estimates

Williston Basin Oil Production & Export Capacity, BOPD

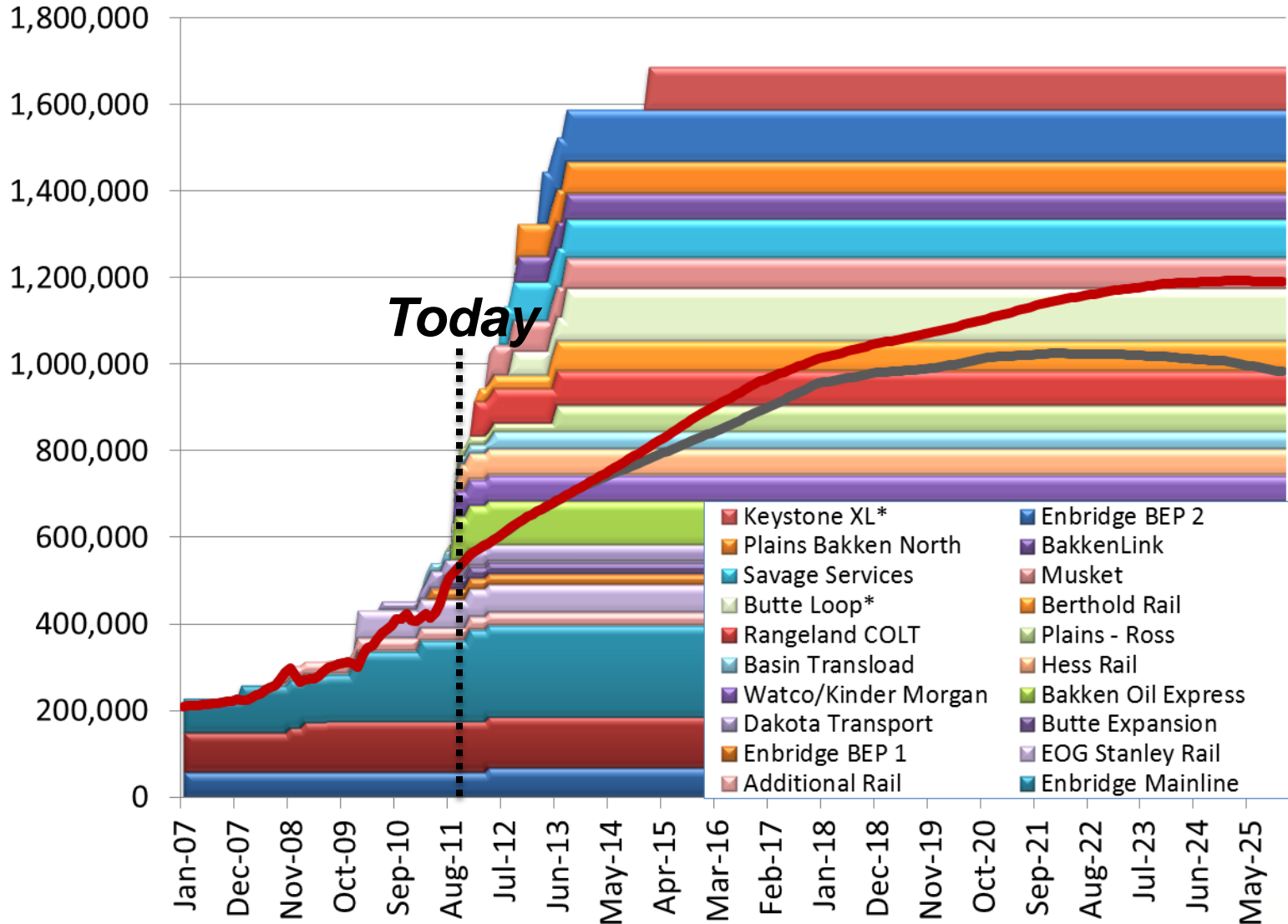


Production forecast is for visual demonstration purposes only and should not be considered accurate for any near or long term planning.

*Projects still in the proposed or internal review process



Williston Basin Oil Production & Export Capacity, BOPD

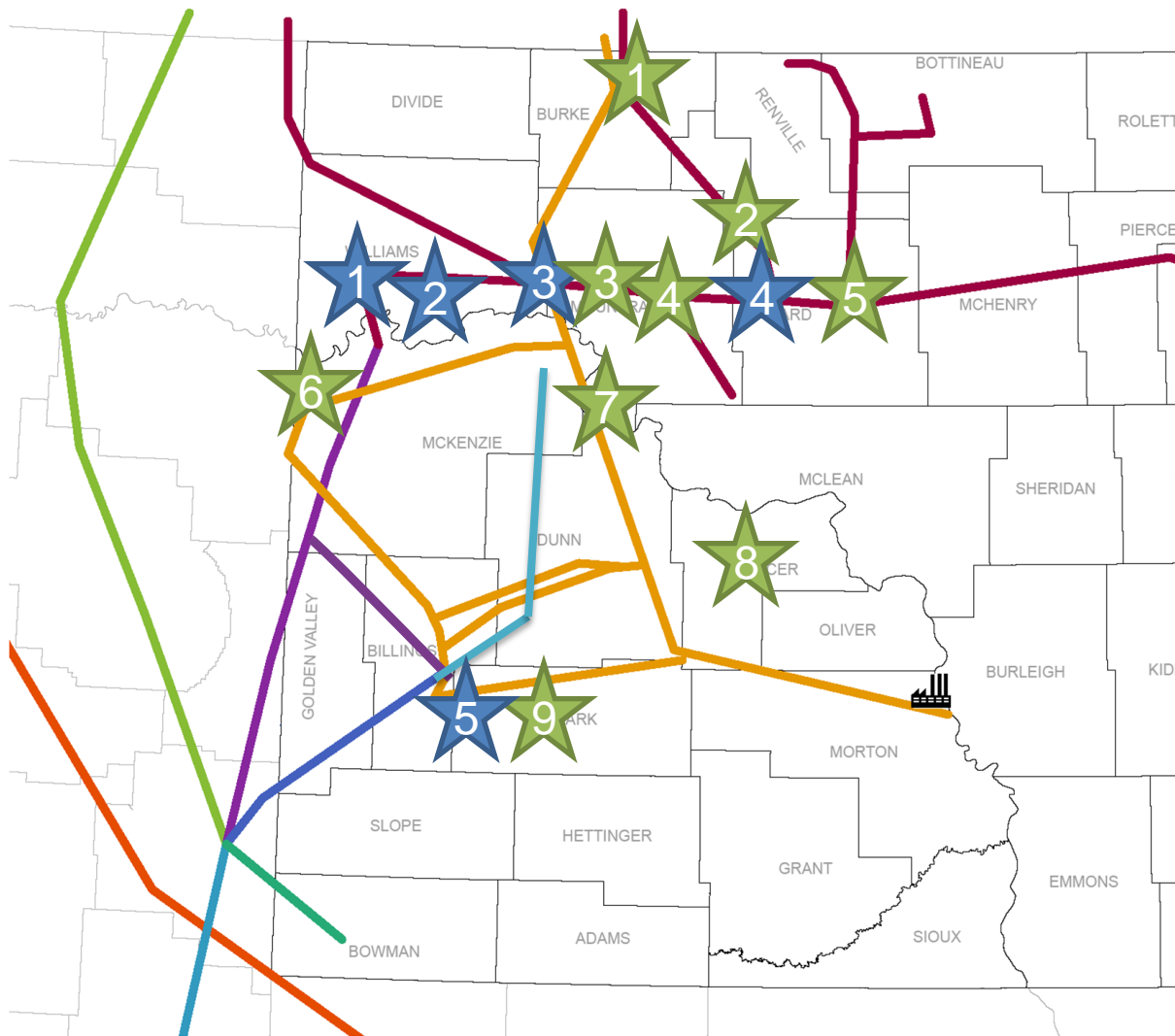


Production forecast is for visual demonstration purposes only and should not be considered accurate for any near or long term planning.

*Projects still in the proposed or internal review process



Existing & Planned Rail Locations



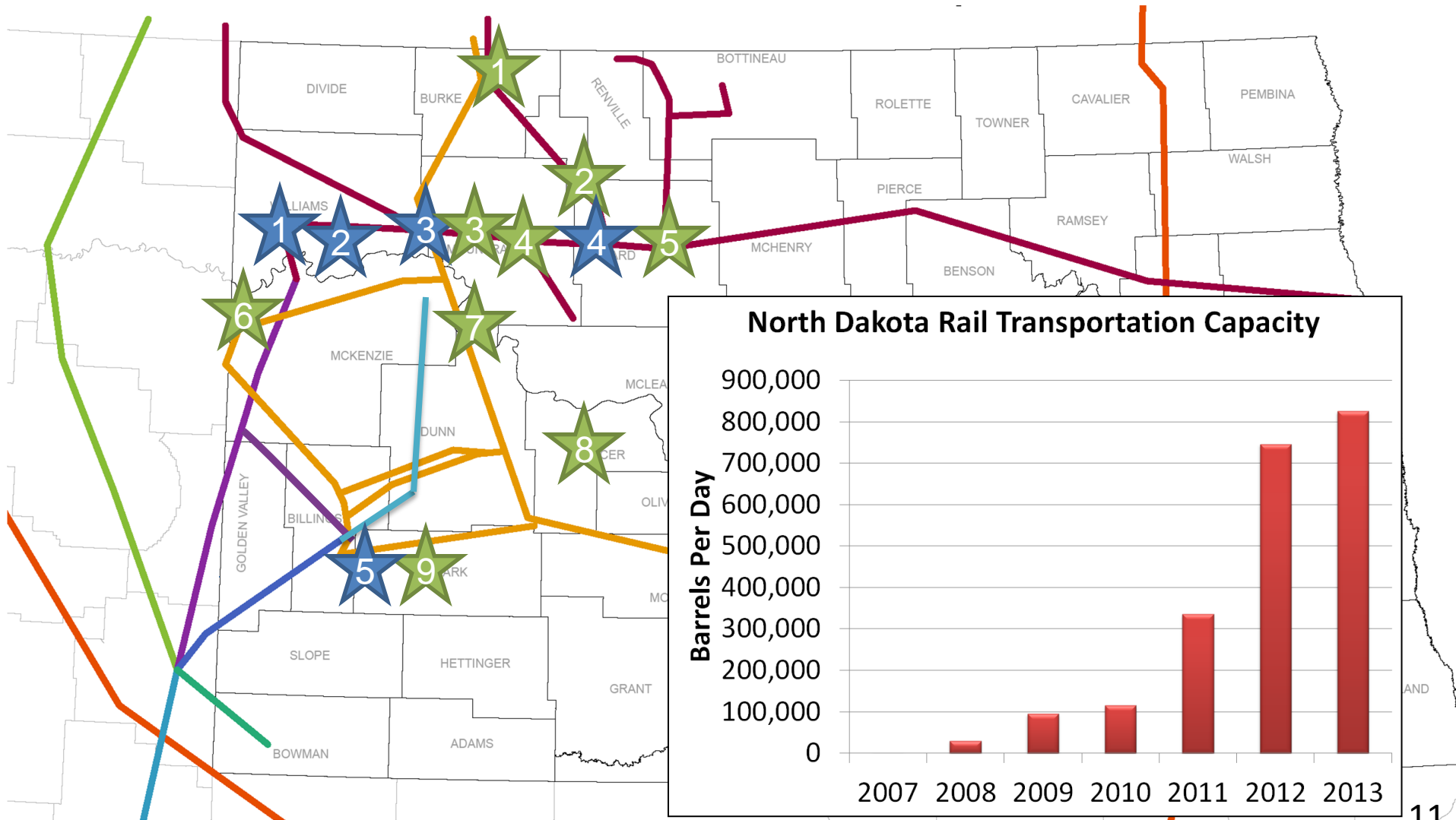
★ Existing

- 1) Stampede
- 2) Donnybrook
- 3) Ross – Plains
- 4) Stanley – EOG
- 5) Minot – ND Port Services
- 6) Dore
- 7) New Town – Dakota Transport Solutions
- 8) Zap – Basin Transload
- 9) Dickinson – BOE

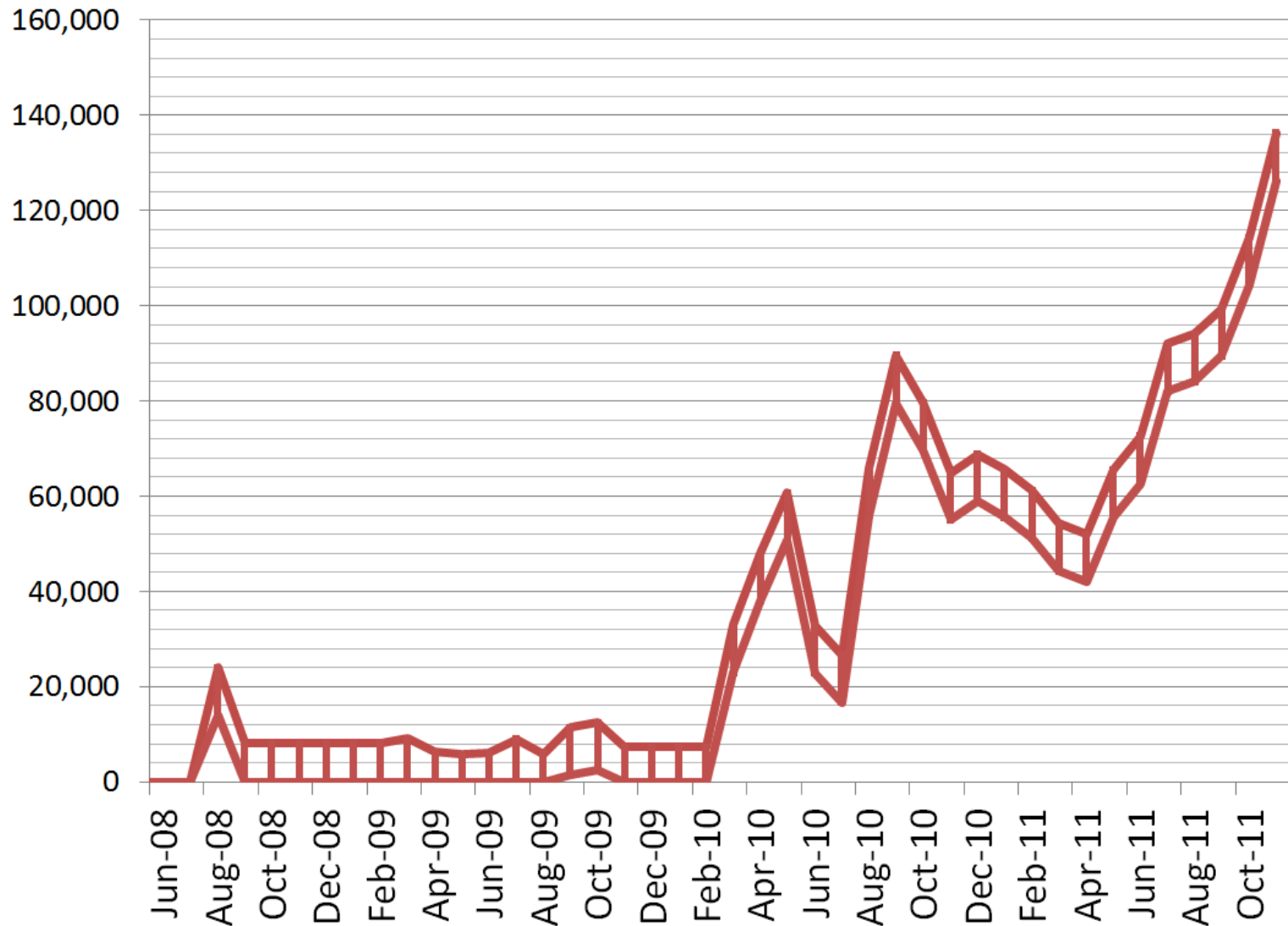
★ Planned

- 1) Trenton – Savage
- 2) Epping – Rangeland
- 3) Tioga – Hess
- 4) Berthold – Enbridge
- 5) Fryburg – Great Northern

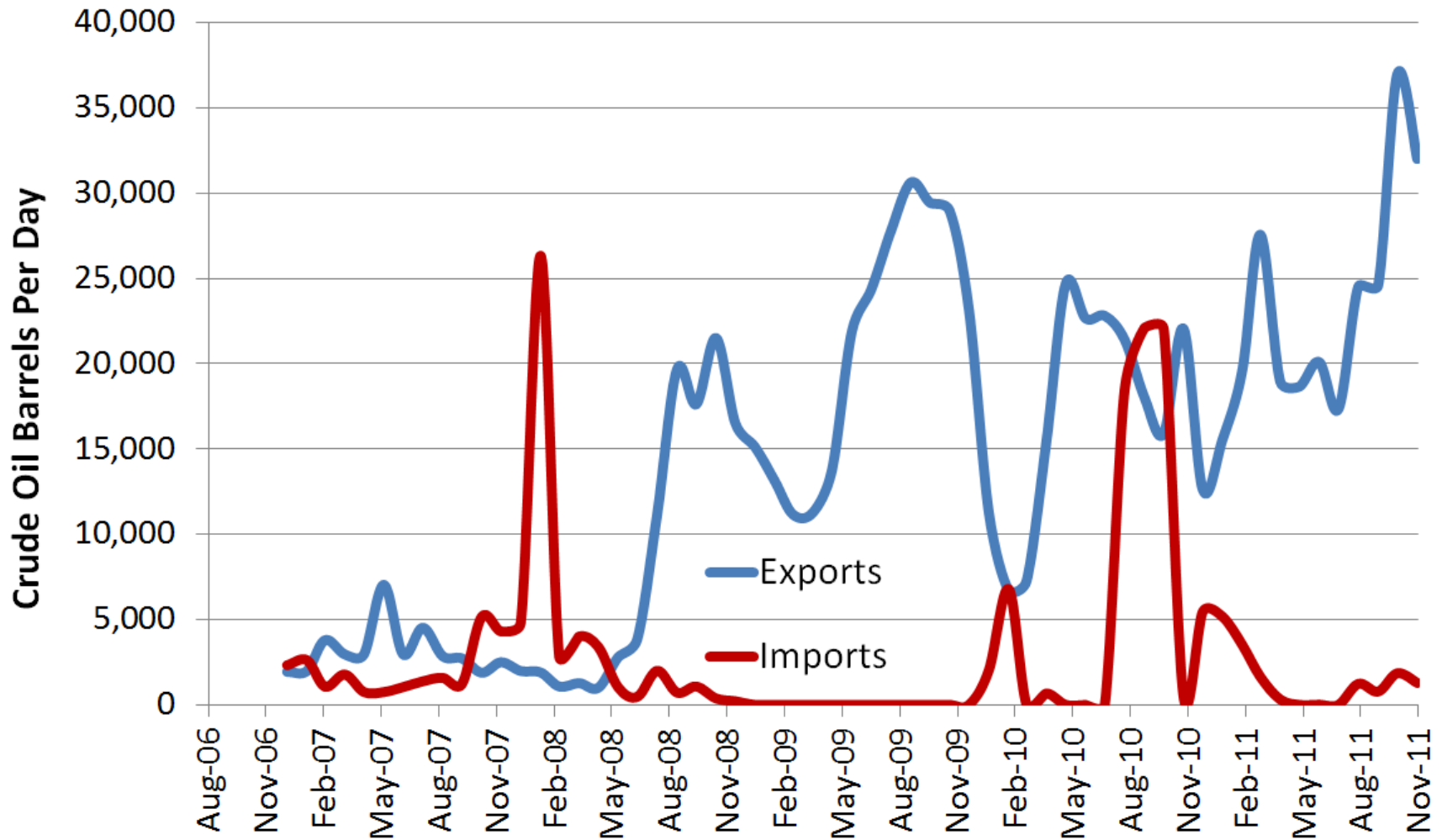
Existing & Planned Rail Locations



High-Low Rail Estimate, BOPD



Williston Basin Truck Imports/Exports

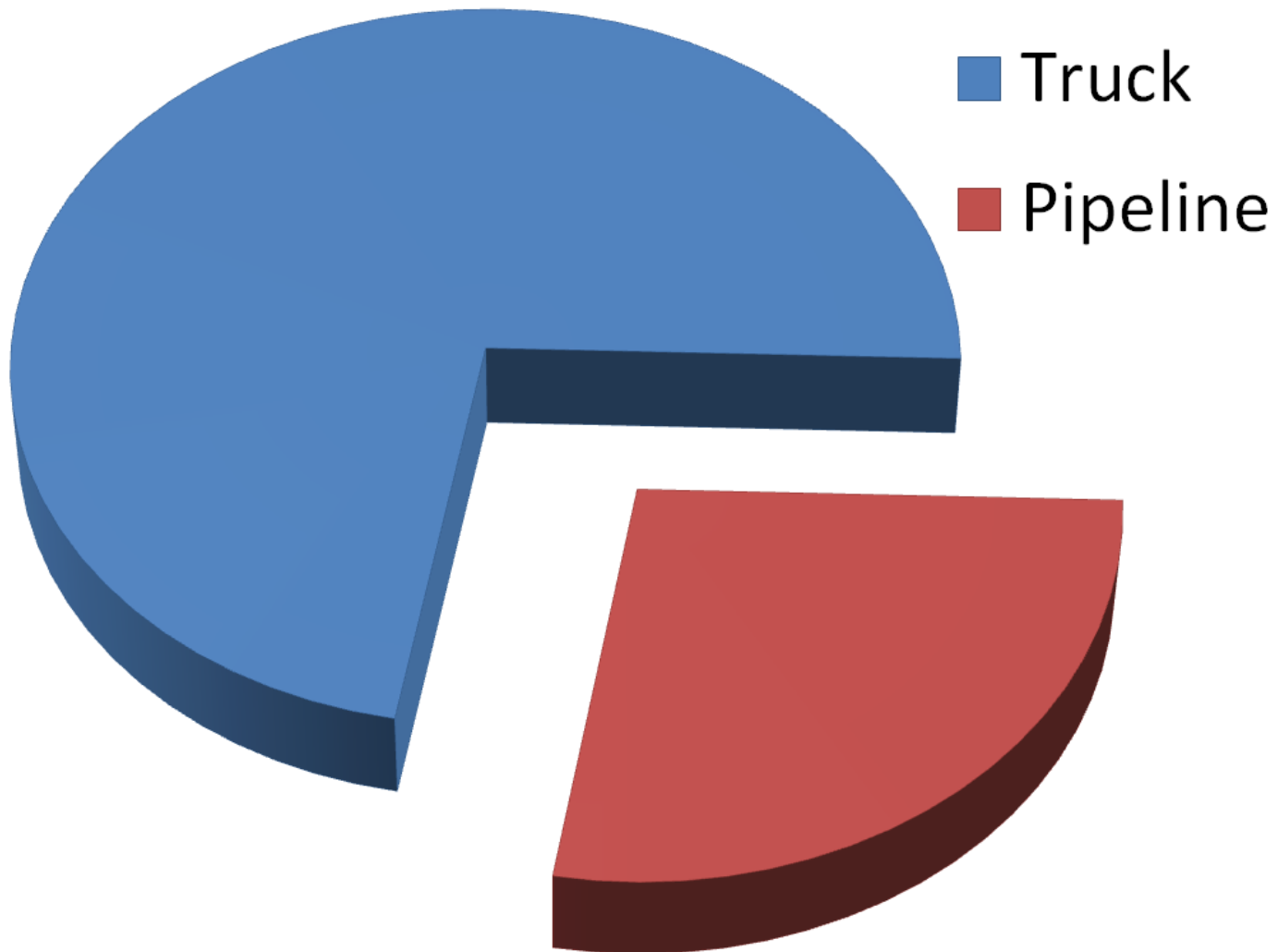


Information collected through the United States International Trade Commission's *Interactive Tariff and Trade DataWeb*

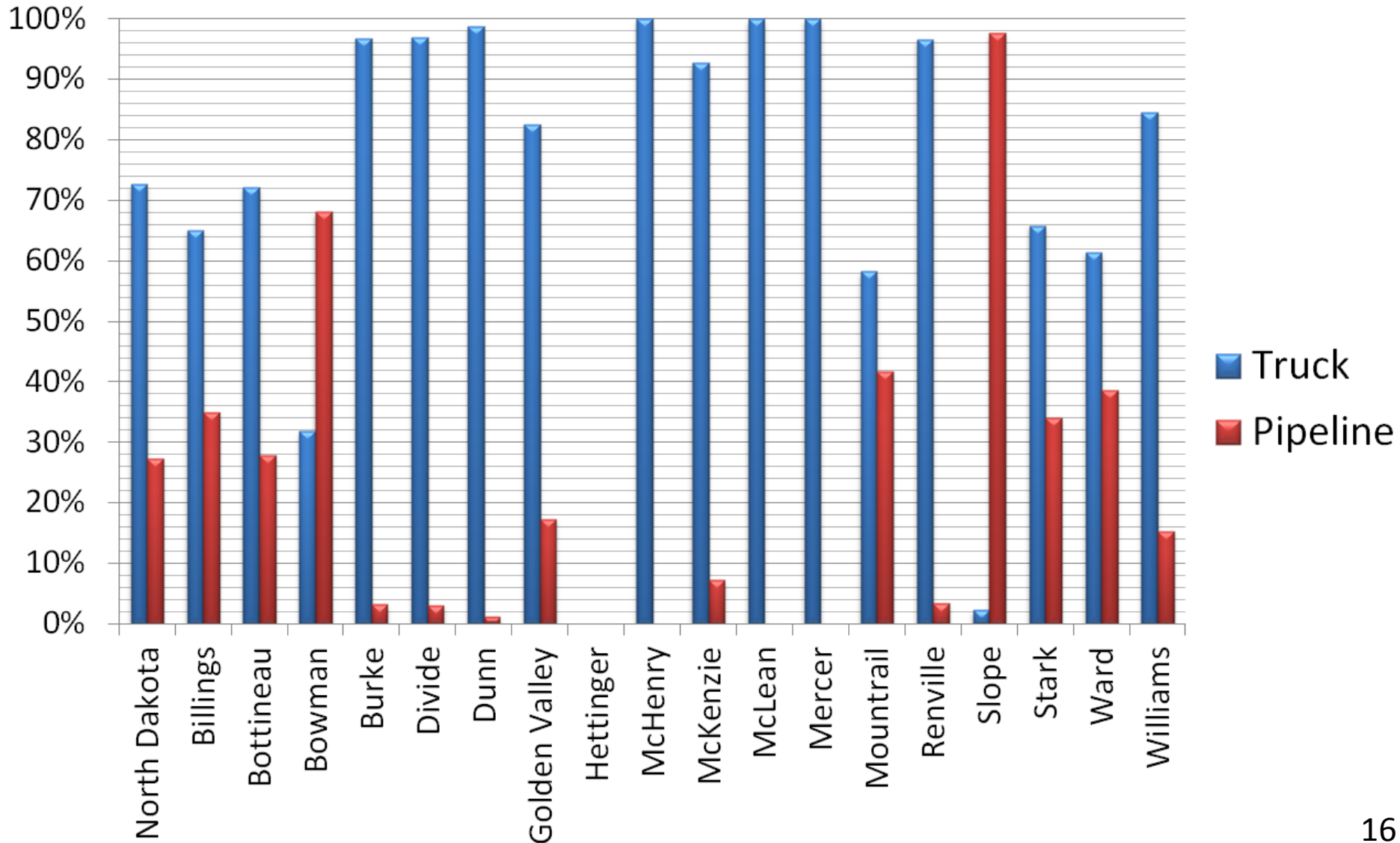
North Dakota Crude Gathering



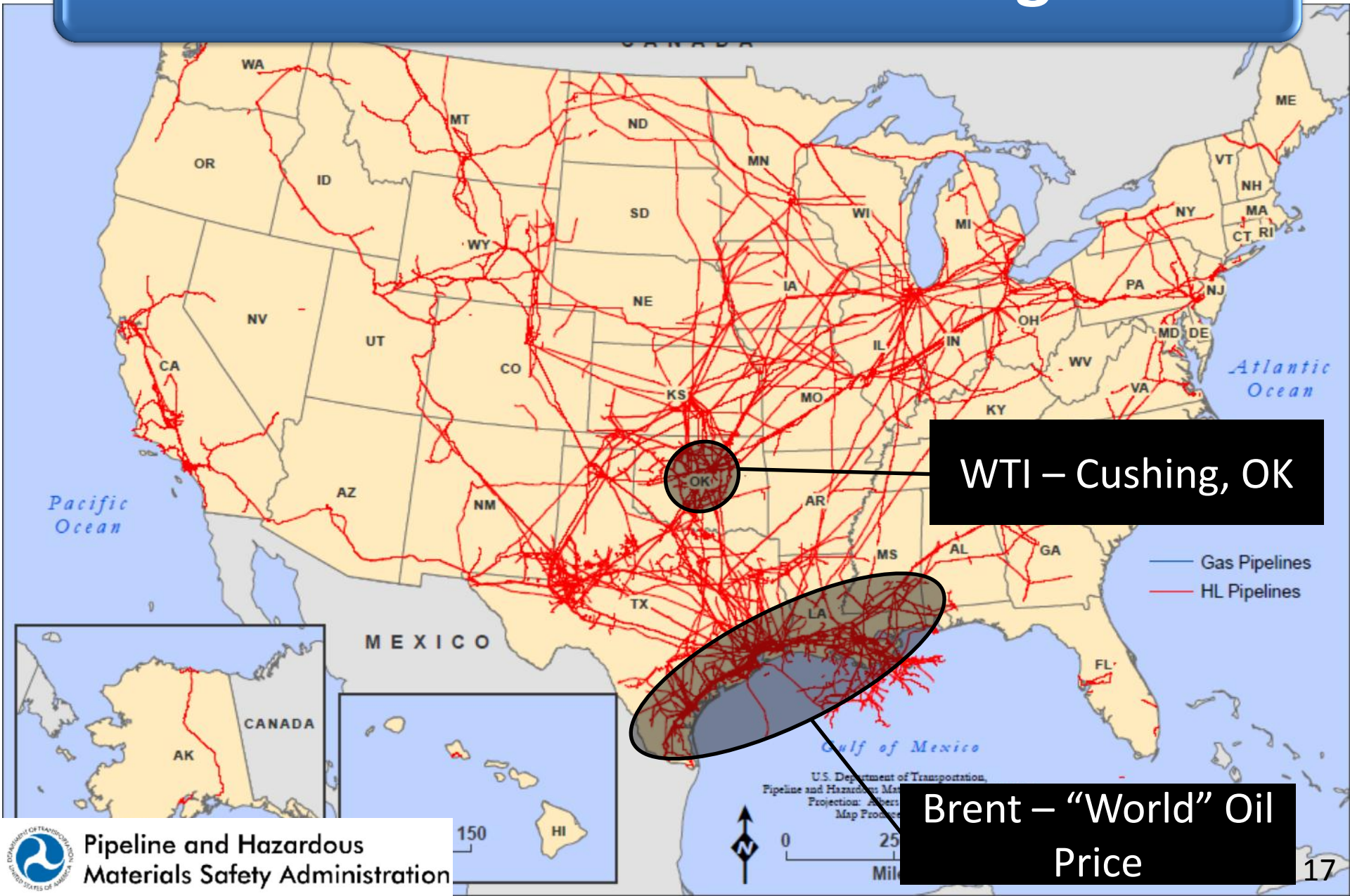
North Dakota Crude Gathering



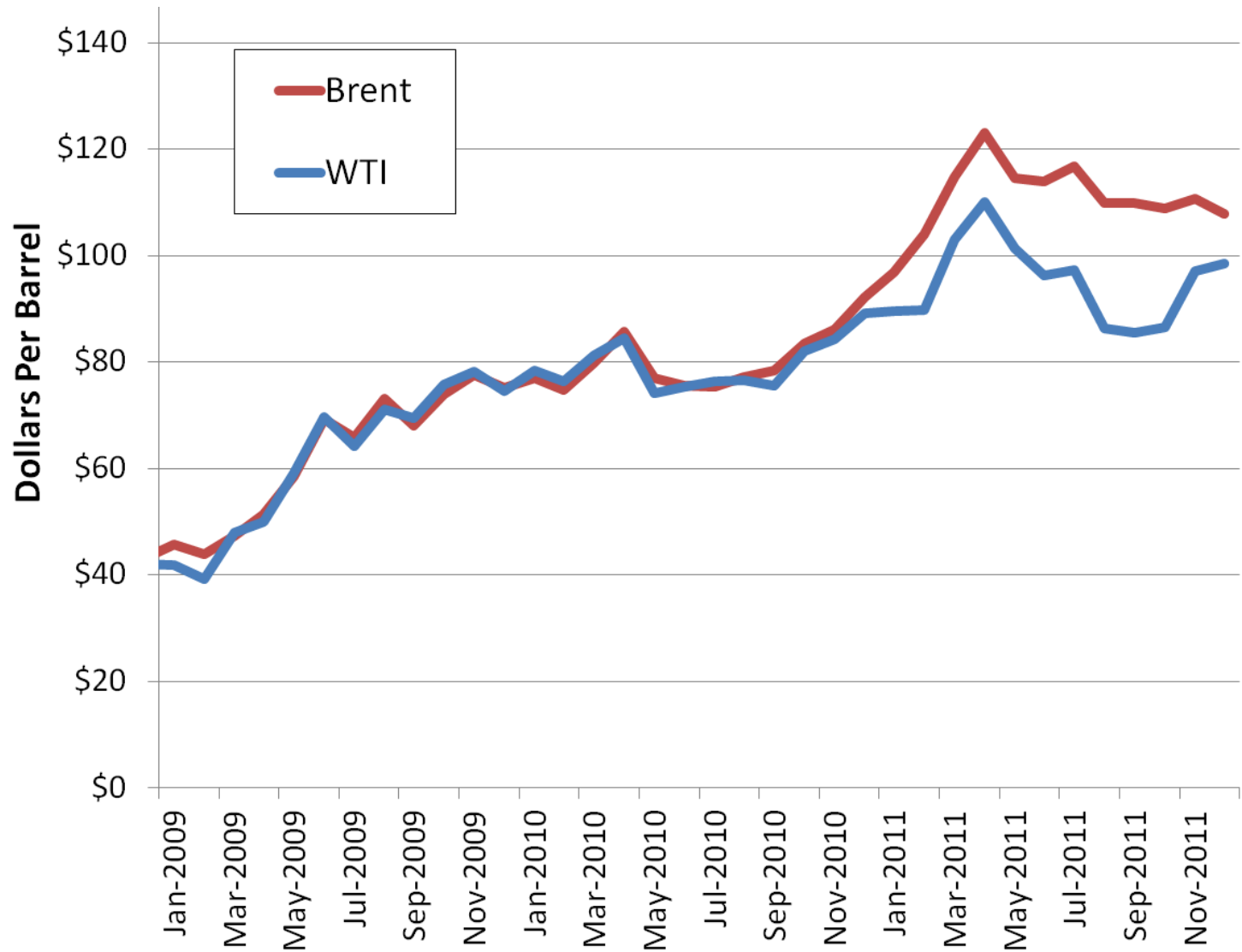
Crude Gathering By County



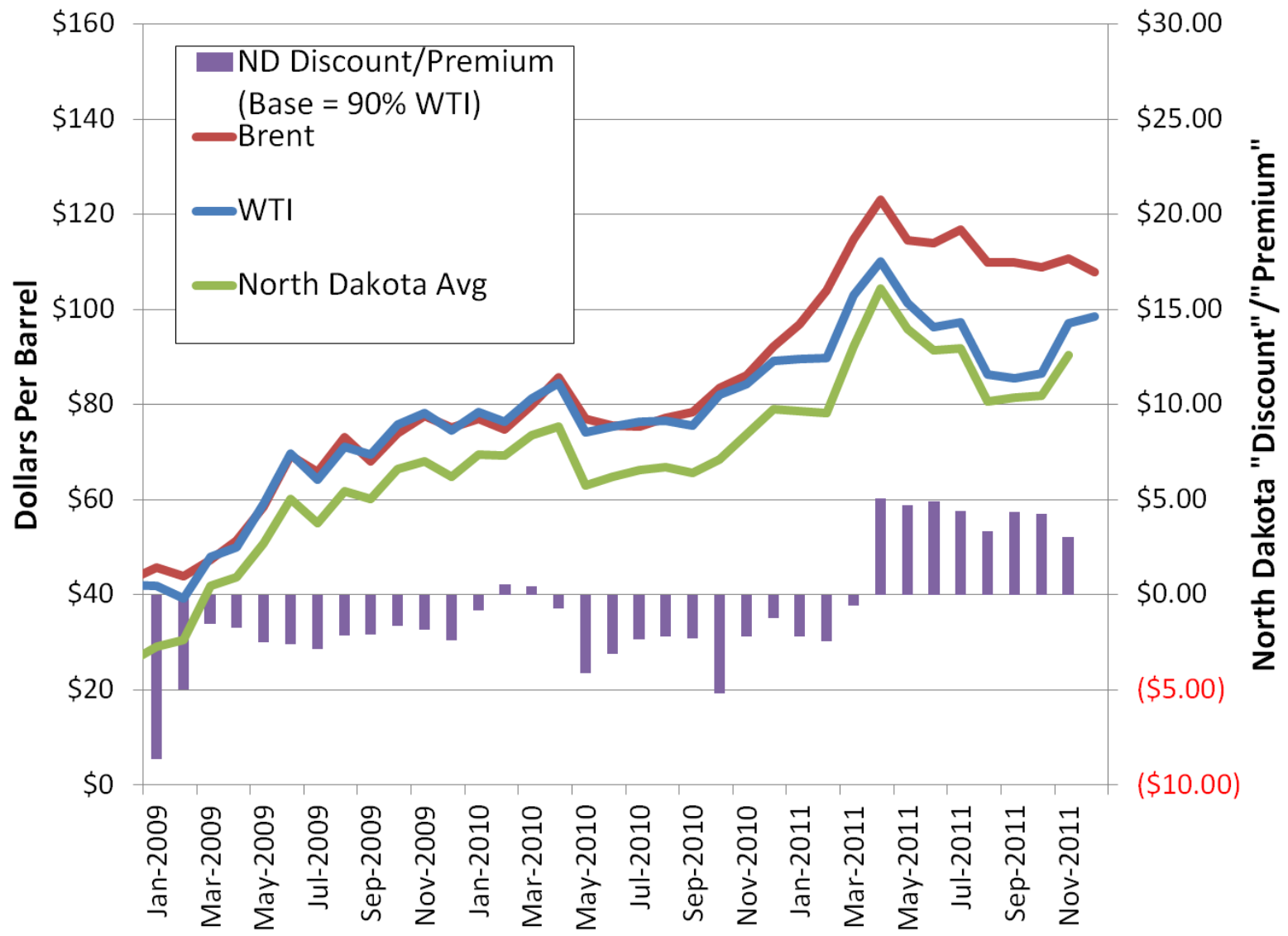
Brent-WTI Crude Pricing



Brent-WTI Crude Pricing



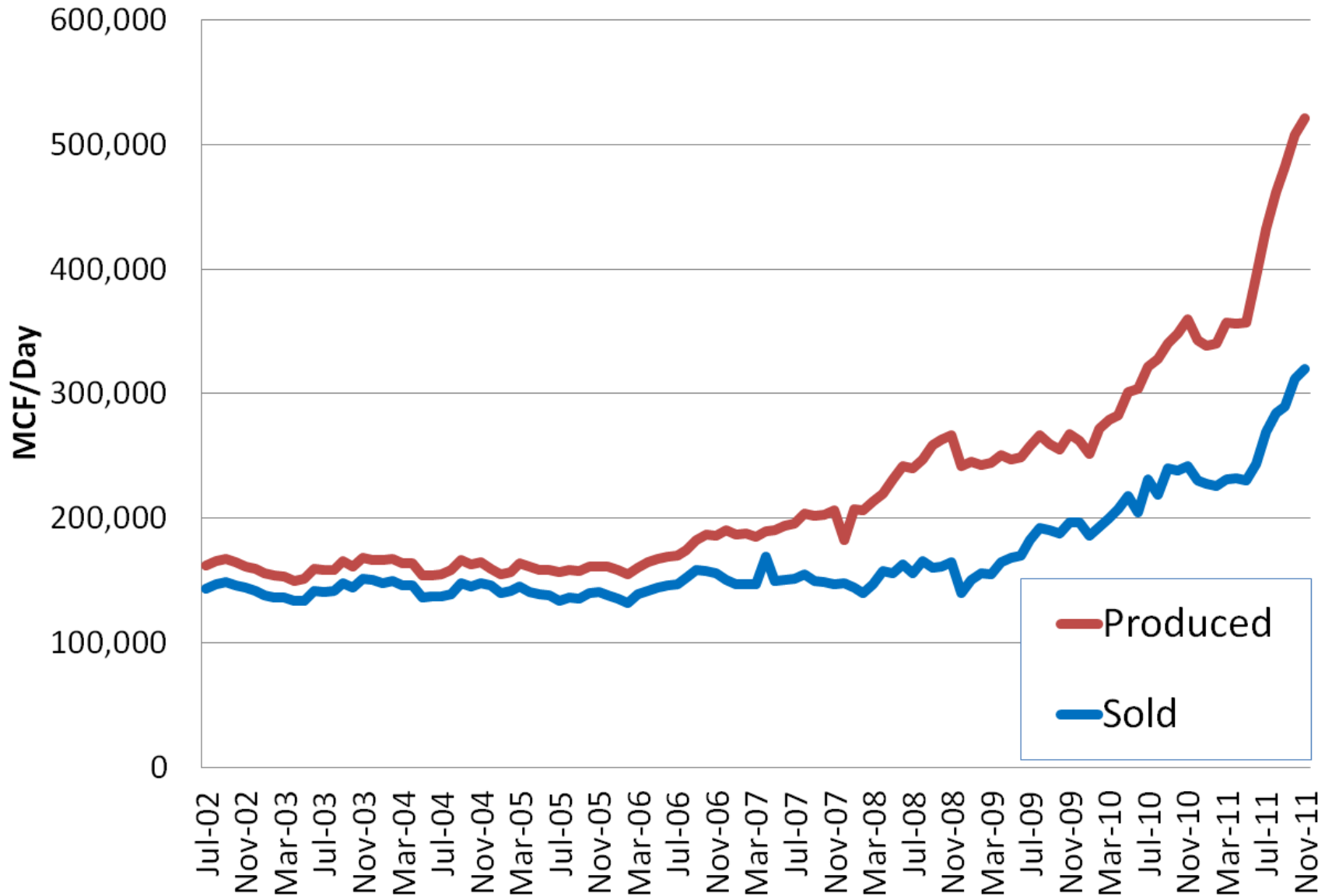
Brent-WTI-ND Crude Pricing



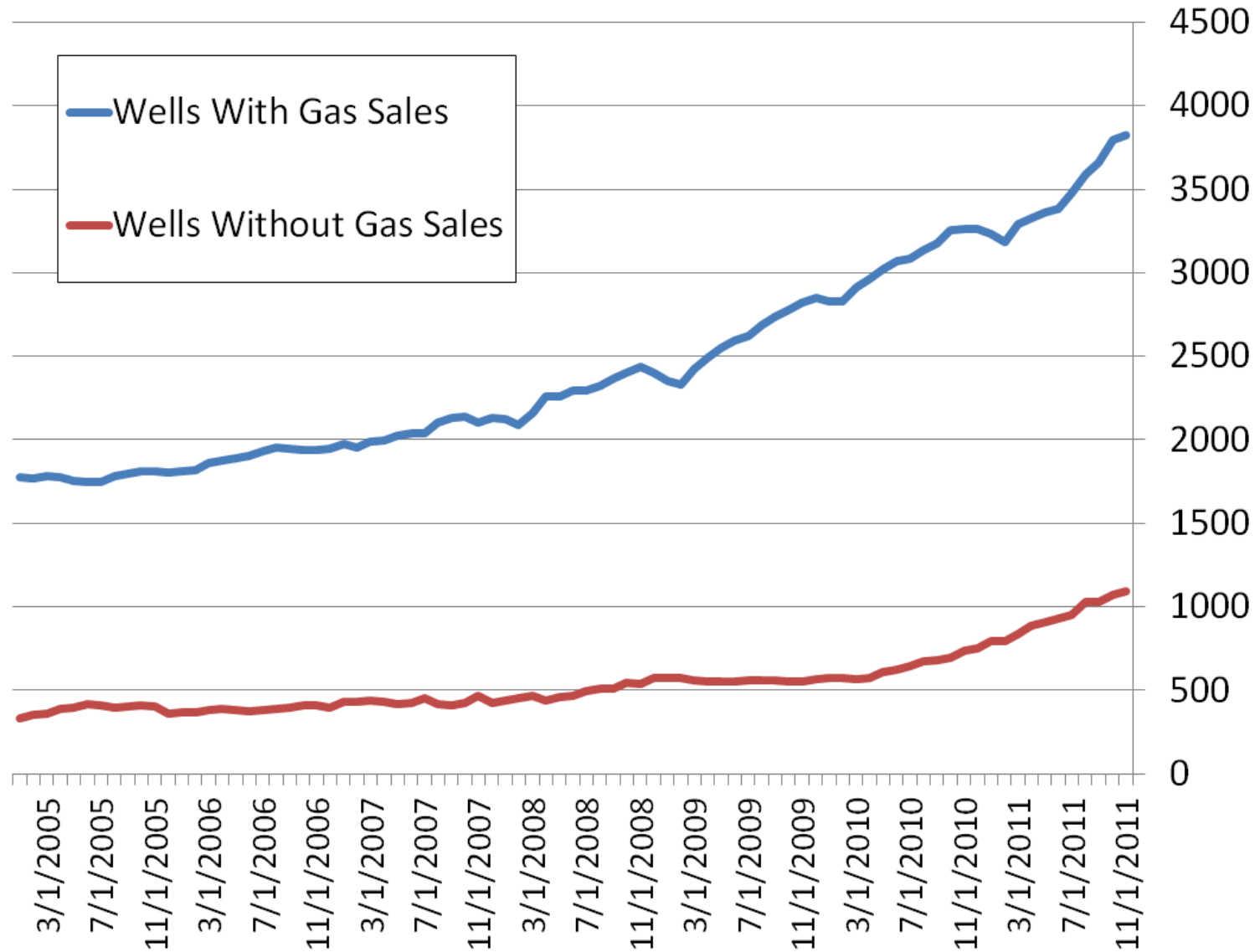
Natural Gas Projects



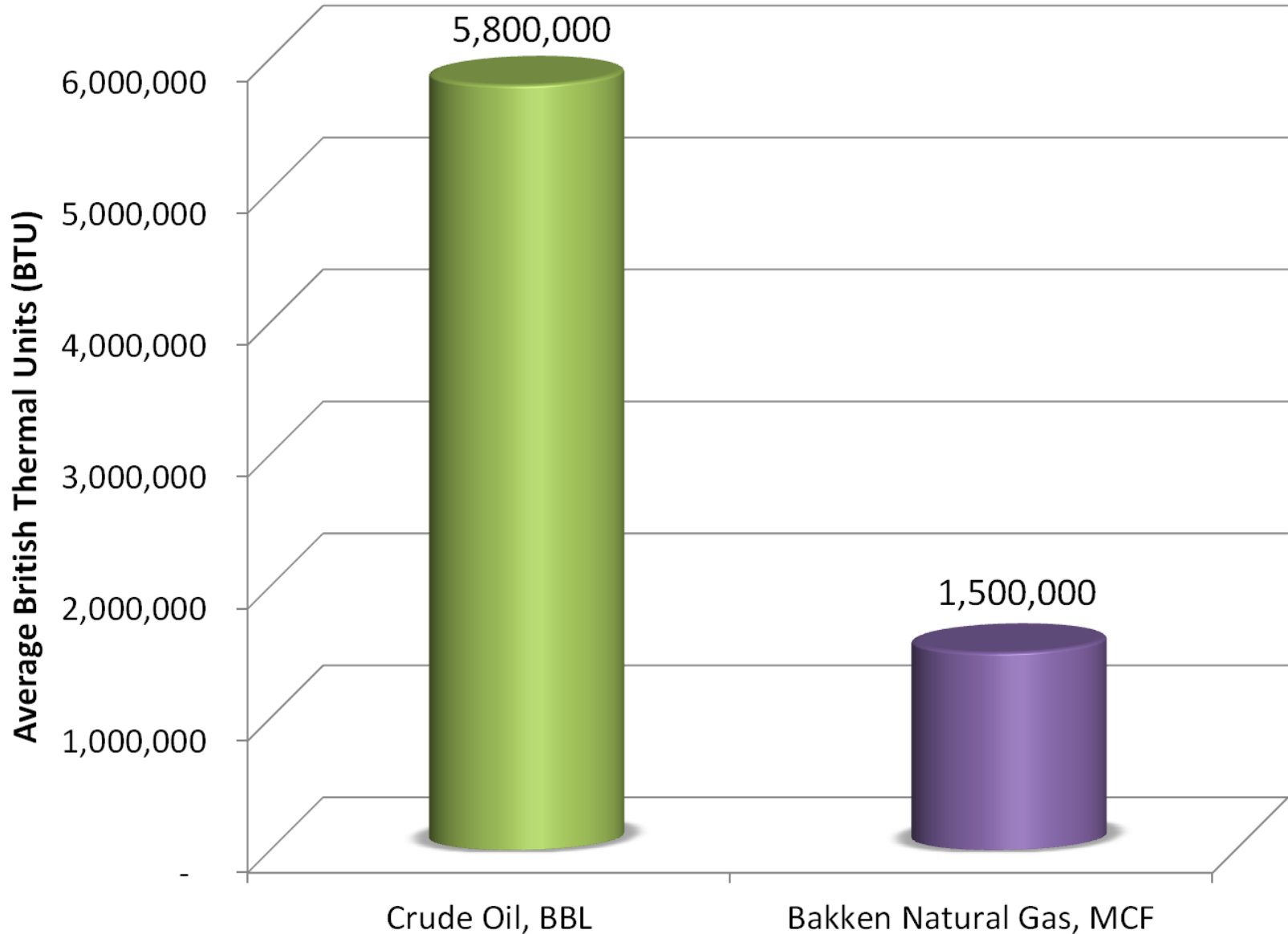
ND Gas Production



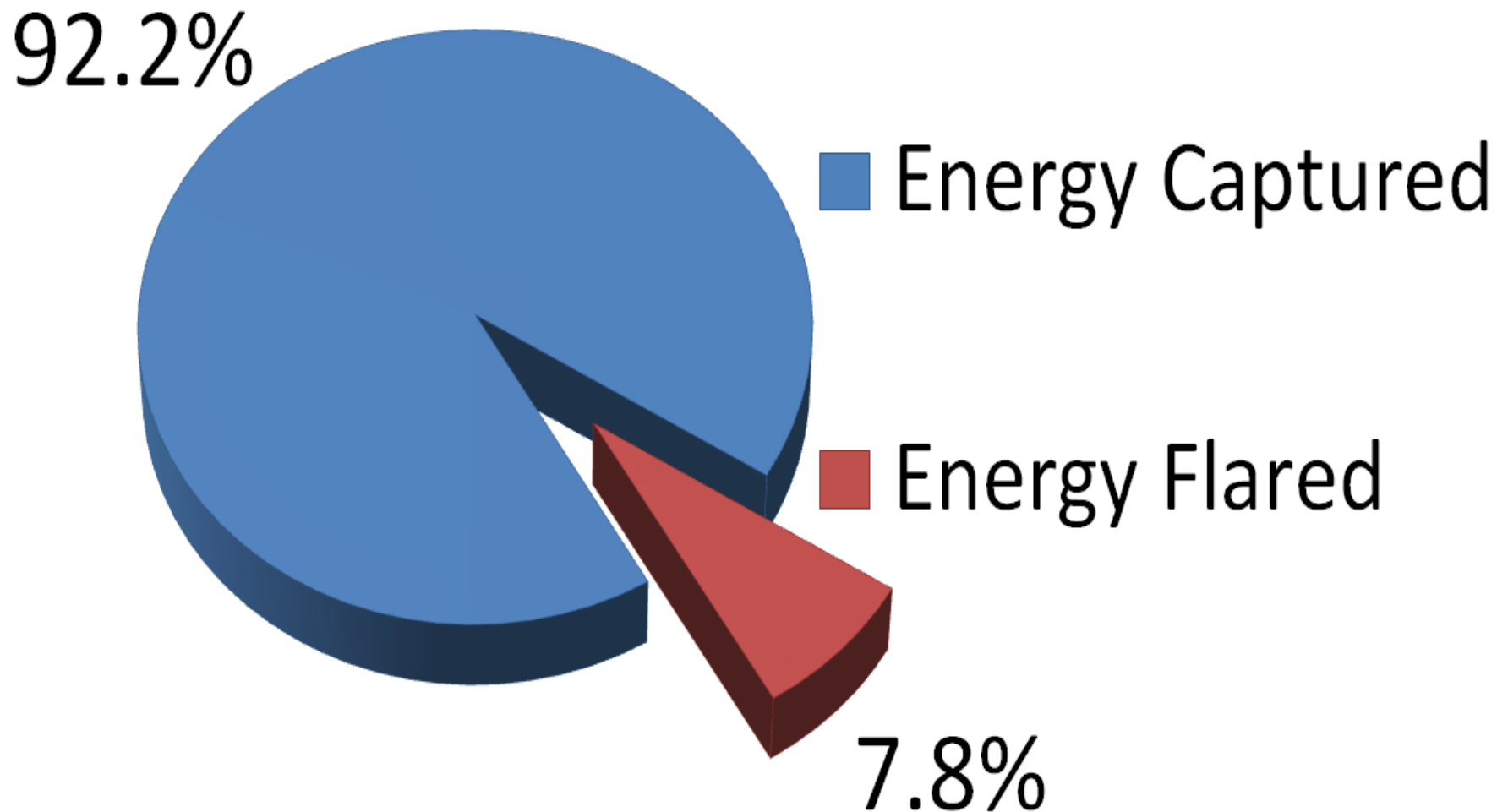
ND Gas Gathering Statistics



Bakken Resource Energy Content



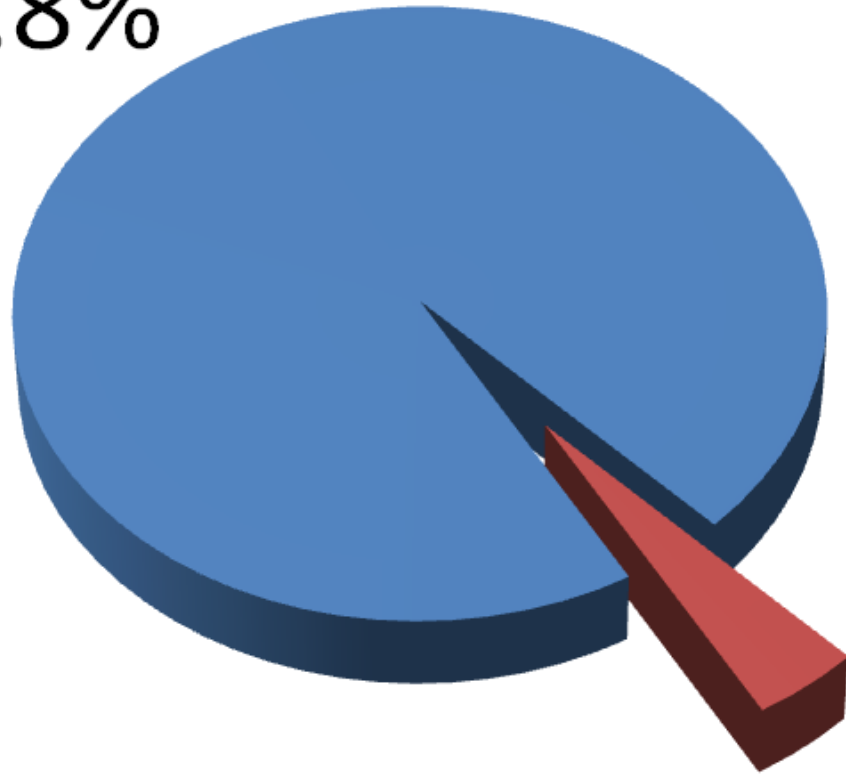
ND Oil & Gas Development Efficiency



September 2011 Data

ND Oil & Gas Development Efficiency

95.8%



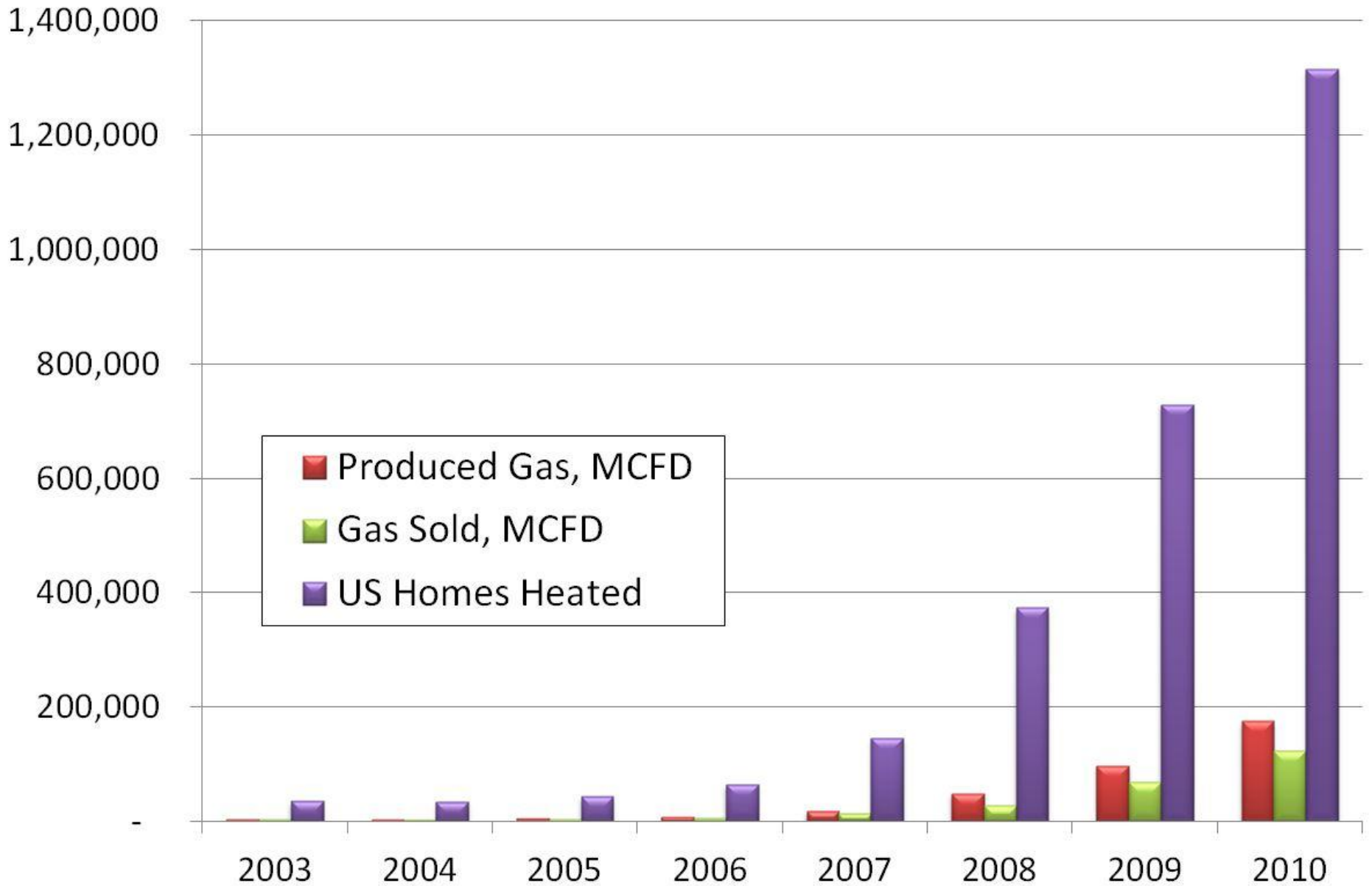
■ Economic Value Captured

■ Economic Value Flared

4.2%

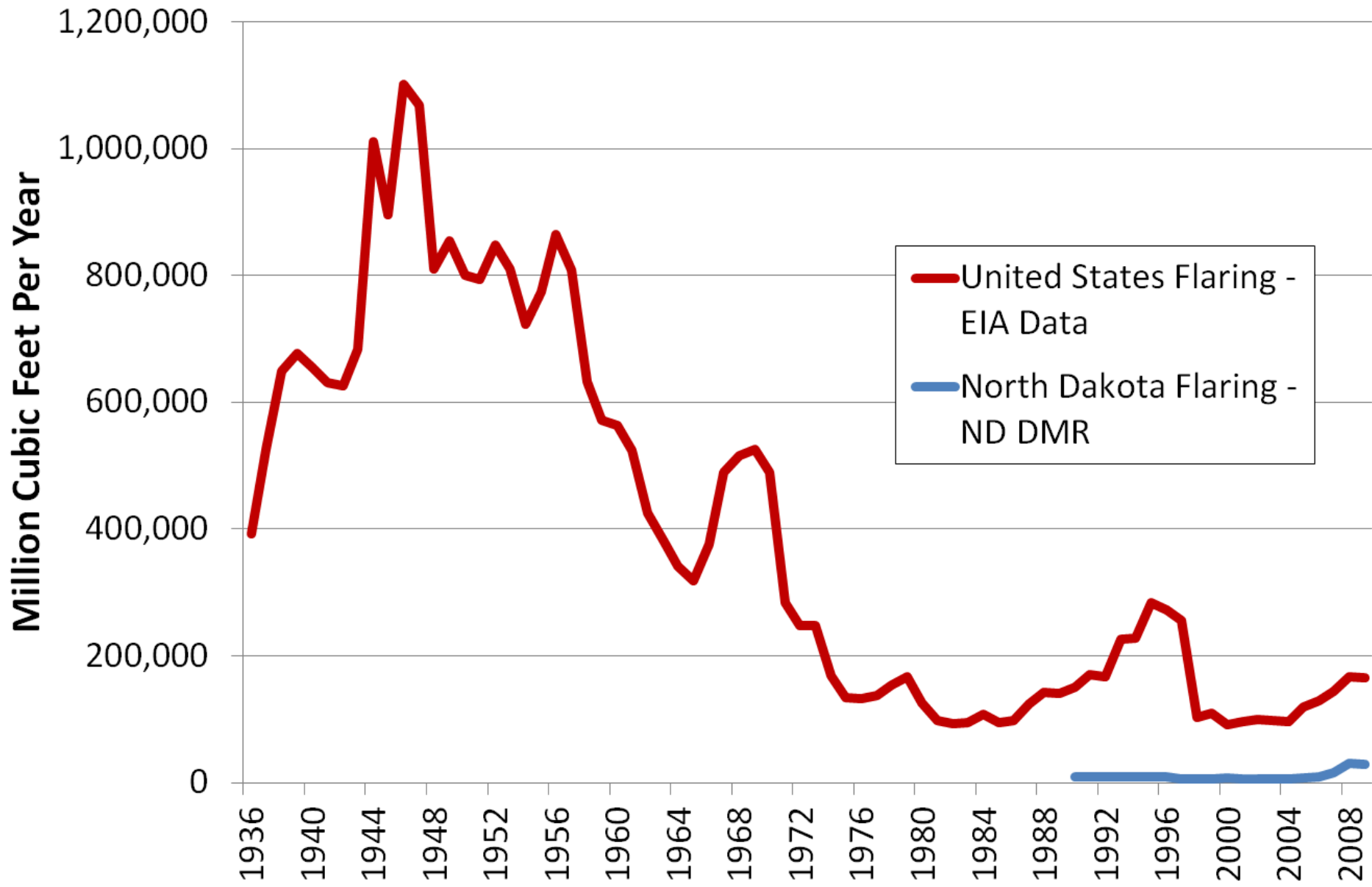
September 2011 Production Data, Oil Price of \$81.38/bbl,
Est. Natural Gas/NGL Wellhead Price of \$10.00/MCF

Bakken & Three Forks Natural Gas



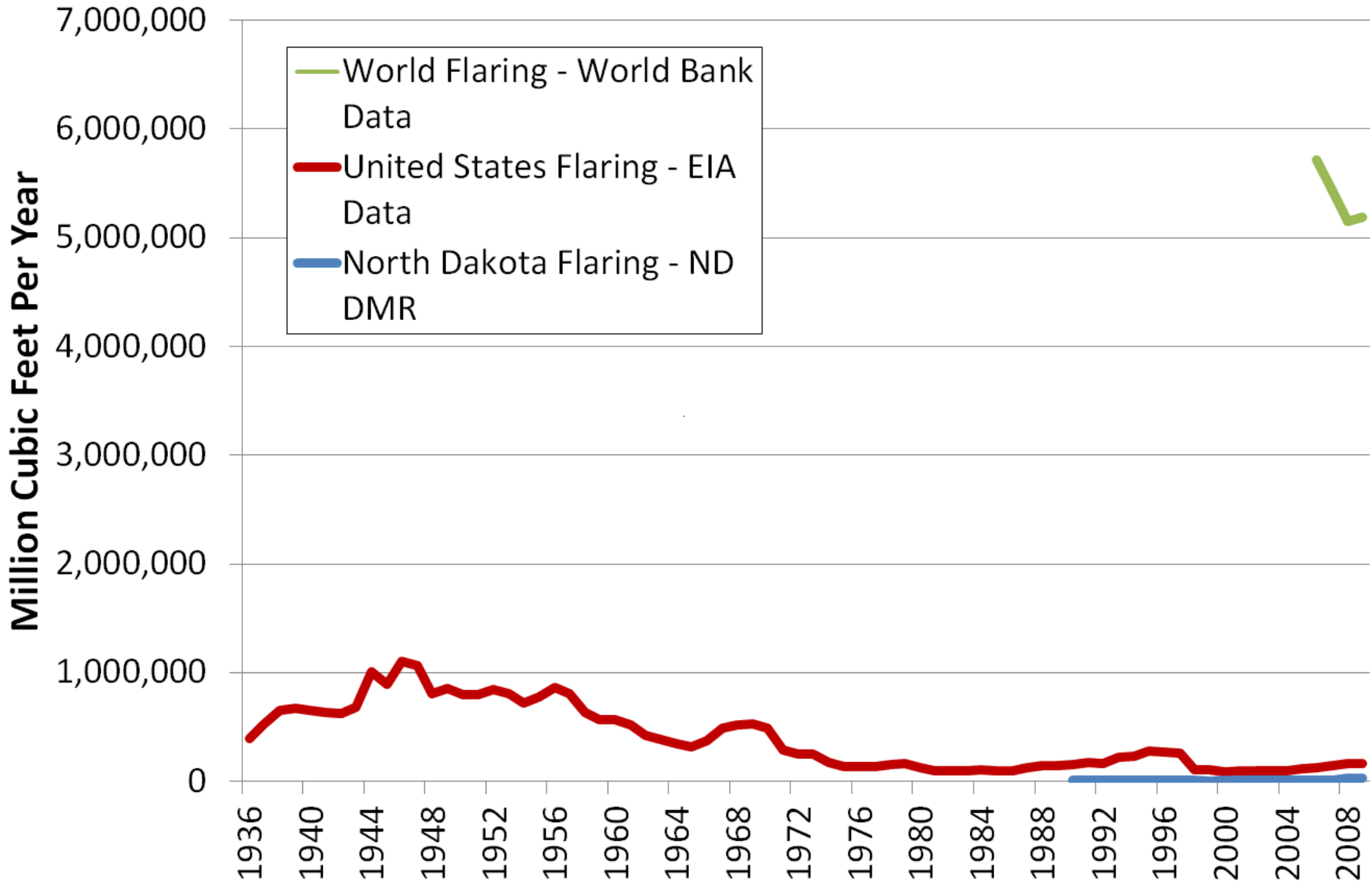
Assumes Avg Home Uses 72.4 Million BTU's Per Year - Source: AGA

United States - North Dakota Natural Gas Flaring



Data: Most Recently Available US EIA Data and ND Department of Mineral Resources

World Natural Gas Flaring



Data Source: World Bank, Most Recently Available US EIA Data, and ND Department of Mineral Resources

Natural Gas Study

Elm Coulee Montana

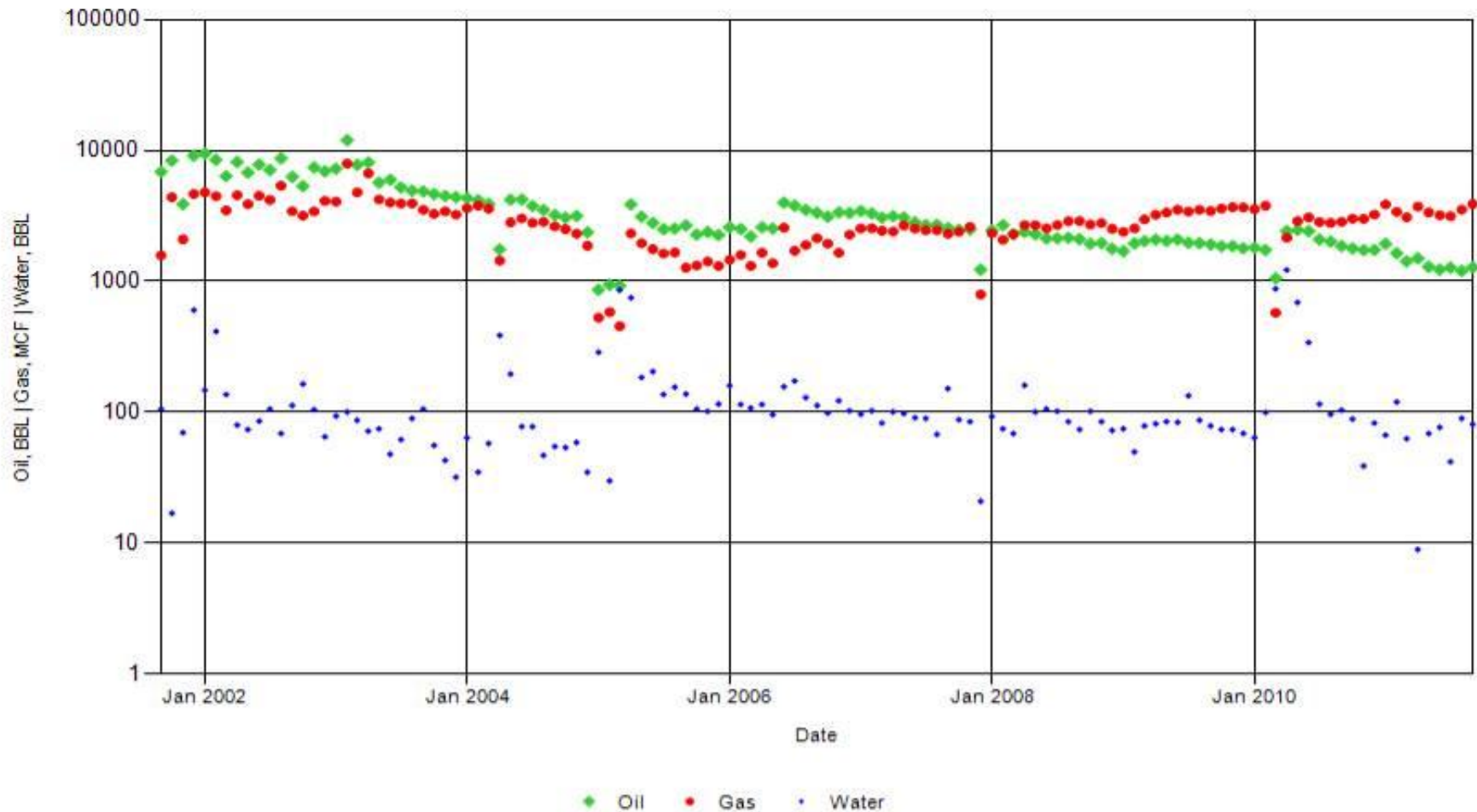
API Number:

25083218940000

Well Name:

Burning Tree Vaira 5-2H

Well Production

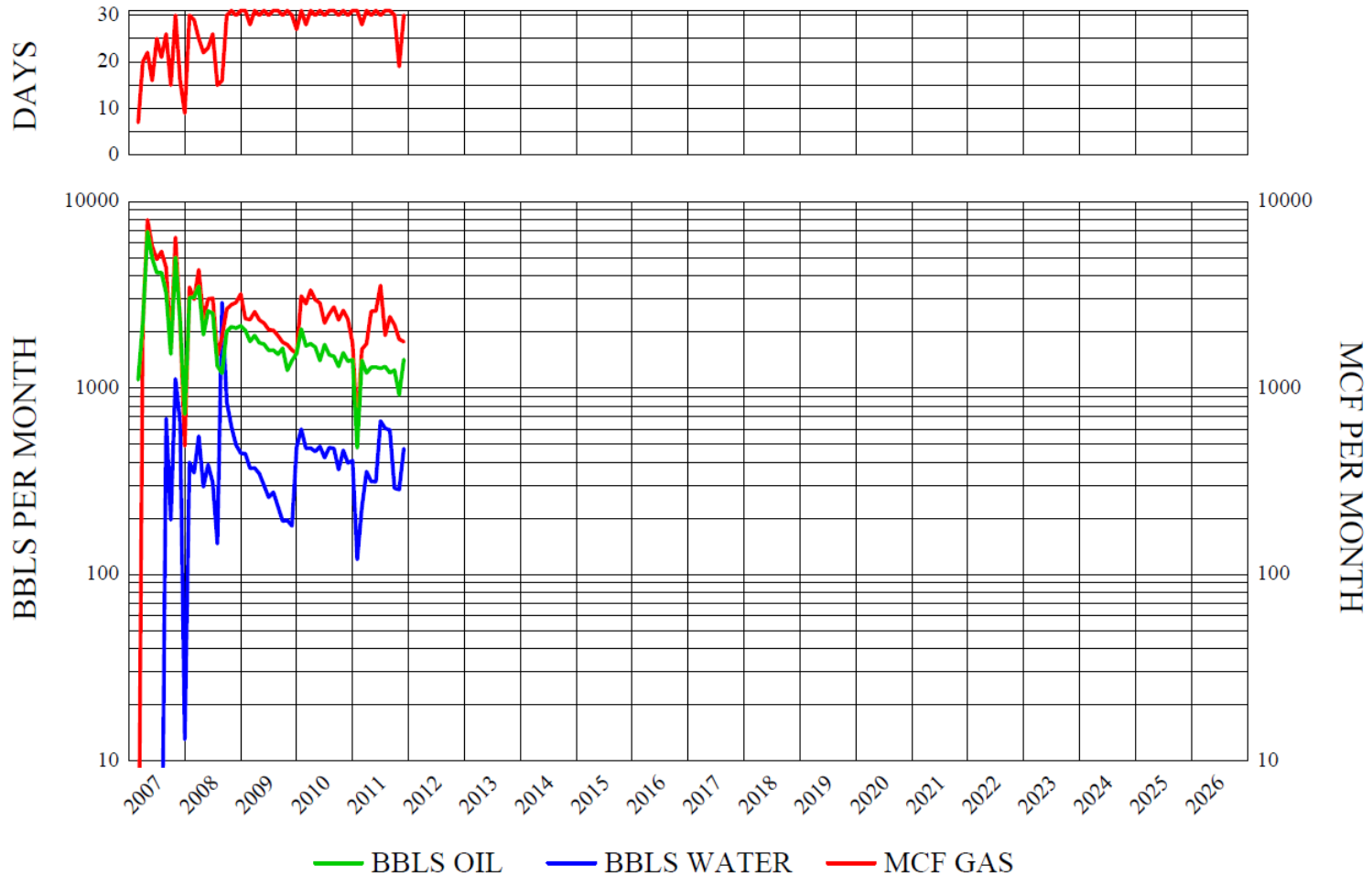


Midway Field North Dakota

#16415 33-105-01601-00-00 SESW 32-T157N-R95W
LANA KRISTY 29-32H
MUREX PETROLEUM CORPORATION
MIDWAY-BAKKEN

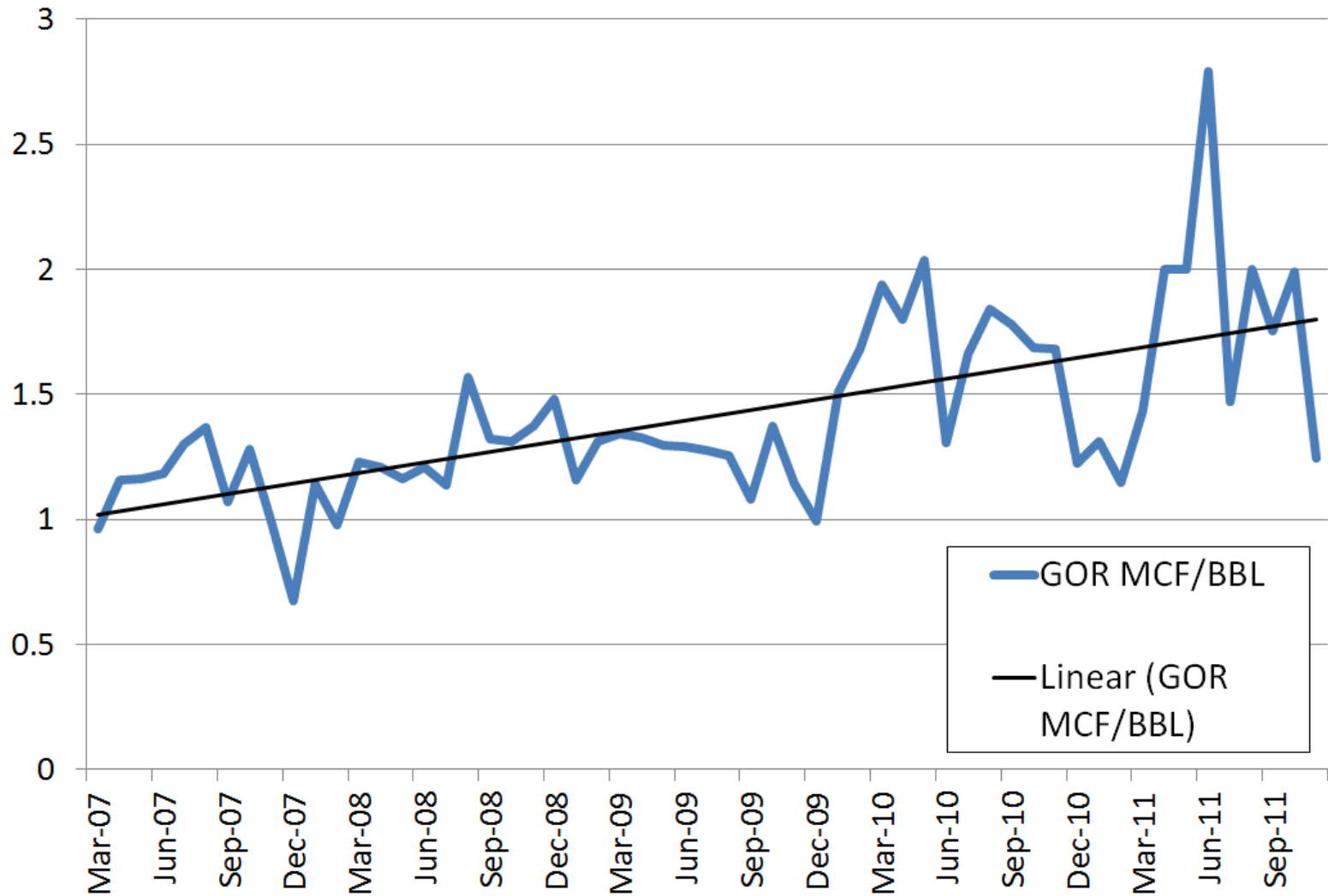
1/23/2012

CUM OIL = 115562
CUM WATER = 23795
CUM GAS = 154302

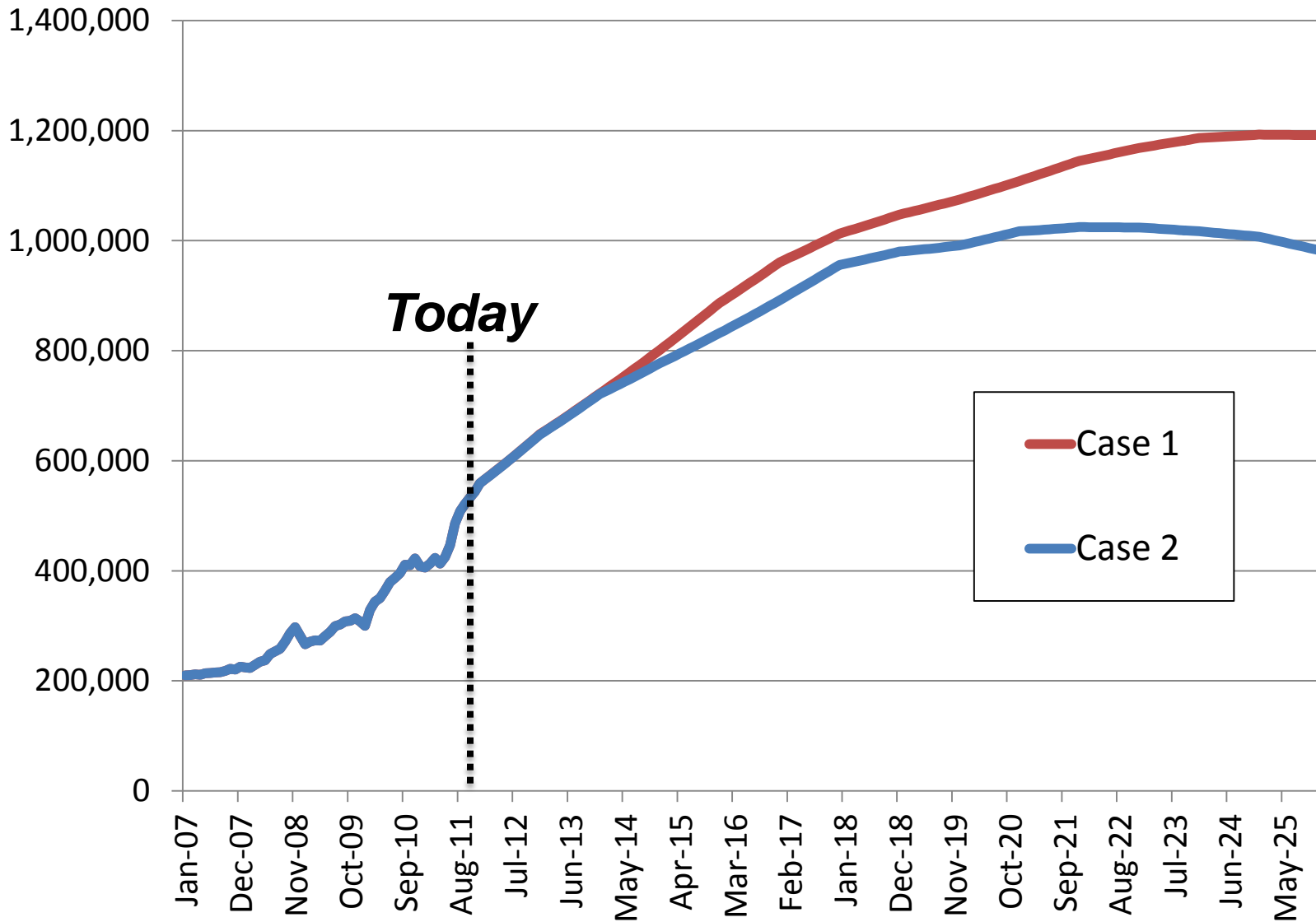


Midway Field North Dakota

Well File 16415



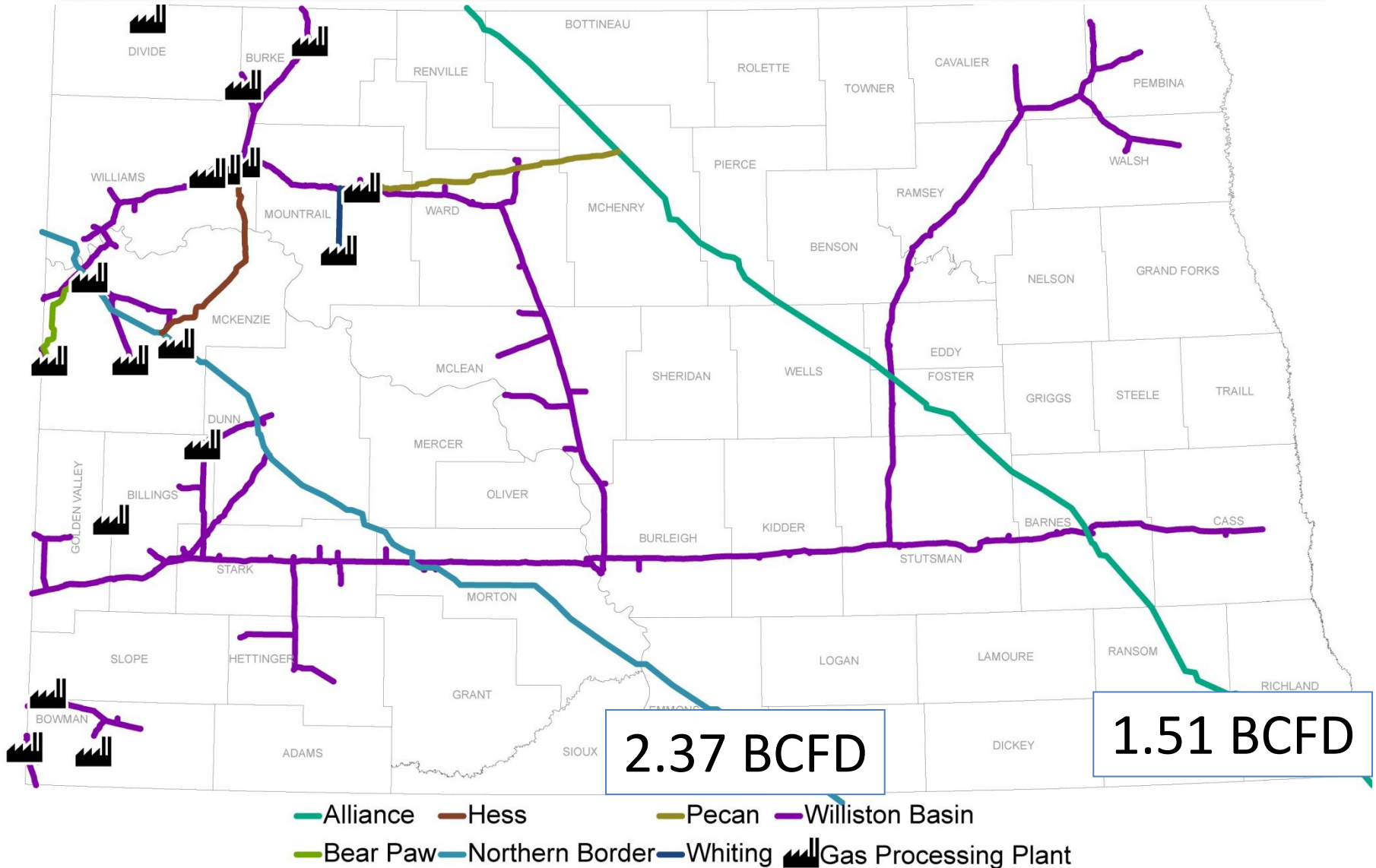
Forecasting Williston Basin Oil Production, BOPD



Production forecast is for visual demonstration purposes only and should not be considered accurate for any near or long term planning.



Gas Transmission Pipelines



Contact Information

North Dakota Pipeline Authority

600 E. Boulevard Ave. Dept. 405
Bismarck, ND 58505-0840

Phone: (701)220-6227

Fax: (701)328-2820

E-mail: jjkringstad@ndpipelines.com



Know what's below.
Call before you dig.

Website:

www.pipeline.nd.gov

